



Todd County Soil and Water Conservation District Board of Supervisors Agenda

The Todd SWCD Board of Supervisors will be holding a meeting of SWCD Board of Supervisors on Thursday, June 11, 2026, beginning at 8:30 am in person at the Historic Courthouse, Commissioners Board Room located at 215 1st Ave S, Long Prairie, MN 56347.

Agenda Item #	Presenter
1. Routine Business	
1.1. Call to Order	Chairperson
1.2. Pledge of Allegiance	Chairperson
1.3. Call for Introductions	Chairperson
1.4. Act on Approving the Agenda	Chairperson
1.5. Act on Approving Minutes -May 14, 2026	Secretary
1.6. Act on Approving Program Summary Report—May 2026	Treasurer
1.7. Call for Conflict of Interest	Chairperson
1.8. Celebrations- Good Job Dale, Barb and Jason (candidate) for getting your election information in!	
2. Reports	
2.1. Commissioners' Report	Byers and Denny 5 min
2.2. Director Report	Ossefoort 2 min
2.3. SWCD Manager Report	Anton 5 min
2.4. Staff Update & Visual Report	Votruba 5 min
2.5. Report on Staff Accomplishments	Anton 2 min
2.6. NRCS Report	Thoma 5 min
2.7. FSA Report	Fellbaum 5 min
2.8. 1W1P – Sauk- <i>working on Phase Three funding</i>	Williamson 2 min
2.9. 1W1P – Red Eye- <i>working on Phase Three funding</i>	Wendel 2 min
2.10. 1W1P – Long Prairie- <i>working on Phase Three funding</i>	Katterhagen 2 min
2.11. 1W1P – Crow Wing- <i>realigning budget items for Phase One</i>	Wendel 2 min
2.12. 1W1P – Mississippi-Brainerd - Phase Two has been approved	Bebus 2 min
2.13. BWSR Report	Arne 5 min
3. Decisions needed for encumbering cost-share funds	
3.1. Reiffer- from M-B WBIF C24-0198- # 2026.06.11-3.1, in the amount of \$28,965.90 for a Livestock Access Control Project.	Christiansen for Moore 5 min
3.2 Beste- from FY23 LCCMR- # 2026.06.11-3.2 in the amount of \$1200 MAX for an FSP.	Christiansen 1 min
3.3 In development: Rice Lake Properties- East, Lone, and SE- from FY23 LCCMR, # 2026.06.11-3.3 in the amounts of \$1200, \$353.25, and \$1200, respectively for three large acreage non-contiguous (429 ac) FSPs . Total Request= \$2753.25. Ossefoort for Anton	3 min

4. Decisions needed for cost-share contract amendments

- 4.1. Goodwin amendment to contract # 2025.11.13-3.2 to increase cost-share from \$87,554.62 to \$94,740.94, an increase of \$7,186.32, to cover the omitted volumes in the engineer bid sheet and to cover a doubling of fuel prices from the time of bid to project install. Both of these variables were outside the control of the landowner. Ossefoort for Anton 3 min
- 4.2 Muehlbauer Group amendment to #2026.03.12-3.9 to increase cost-share from \$11,445 to \$12,195, an increase of \$750, to stabilize the base of the road culvert into channel per request of District Manager for project assurance purposes. Votruba 3 min

5. Decision needed for payment of cost-share funds

- 5.1. Renneberg Hardwoods LLC, #2026.03.12-3.10 in the amount of \$525 from FY23 LCCMR for an FSP in the Long Prairie Watershed on 40 acres. Total Cost= \$700. Ossefoort for Anton 1 min
- 5.2. Katterhagen, C#2026.03.12-3.5 in the amount of \$905.78 P26-0856 Soil Health Delivery funds for tree establishment project in the LP Watershed. Total cost= \$1,207.71 Christiansen for Scheve 2 min
- 5.3. Goodwin, # 2025.11.13-3.2X in the amount of \$94,740.94 from LP WBIF C23-3483 for five water and sediment control basins. Total project cost = \$126,321.25 Ossefoort for Anton 1 min
- 5.4. Muehlbauer Group #2026.03.12-3.9X in the amount of \$12,195 from FY26 Riparian Funds for a waterway and Diversion Project in the Sauk River Watershed. Total cost= \$16,260 Votruba 1 min
- 5.5. Hanson, #2026.03.12-3.3 in the amount of \$716.90 from FY26 Riparian Aid for an urban stormwater control project in the LP Watershed. Total cost= \$955.86 Christiansen 2 min
- 5.6. Alstead, #026.03.12-3.22 in the amount of \$1,413.42 from FY26 Riparian Aid for tree establishment to prevent soil erosion in the LP Watershed. Total cost= \$1,944.76 Christiansen 2 min
- 5.7. Ager, #20260409-3.3 in the amount of \$1,132.50 from M-B WBIF C24 for an FSP. Total cost = \$1,510 Christiansen 1 min
- 5.8. Pipek, #202604093.2 in the amount of \$1,050 from C25-0310 Crow Wing WBIF for a FSP. Total cost of \$1,400 Christiansen 1 min
- 5.9. Bebejo Ranch, LLC, #20260514-3.1 in the amount \$1,200 from C24-0198 Mississippi River WBIF for a FSP. Total cost of \$2,320 Christiansen 1 min
- 5.10 Padua Prairie Partnership #20260108-3.3 in the amount of \$114,403.50 from C22-4860 Sauk River WBIF for a grade stabilization project. Total cost of \$152,538. Costing less. Christiansen 1 min
- 5.11. Tentative: P26-0058 Soil Health Practice Payments – Total of 6 Payments

Technicians may be excused.

6. Decisions needed for operations

- 6.1. Sauk River Watershed Collaborative Amendment to Fiscal Agent Agreement- transition of Fiscal Agent from Stearn’s County to Stearns SWCD.

7. Discussion items

- 7.1. 2027 Financial budget meeting date with Larry and Wayne- Management requests a July timeframe
- 7.2. Super Large acreage FSP's- funding by contiguous acreage?

8. Contracts and documents approved between meetings-

- 8.1. W. Sobiech request for FY23 LCCMR Funding, C#20260312-3.6 in the amount of \$1,125 was approved for a FSP on 5/14/2026
- 8.2. G. Sobiech request for FY23 LCCMR Funding, C#20260312-3.8 in the amount of \$525 was approved for a FSP on 5/14/2026

9. Informational

- 9.1. 2nd Friday of the month –Radio Show
- 9.2. June 17, 2026—Area II Meeting- 3 staff; 2 Supervisors
- 9.3. June 18, 2026— 8:00am- Battle Point Park, Osakis- Conservation Bus Tour and Local Work Meeting
- 9.4. June 19, 2026—Office Closed
- 9.5. Neil Zimmer LP WBIF funding steering committee request scheduled for approval on June 5, 2026.
- 9.6. Ron and Stacy Host request for Sauk River WBIF funding approved by steering committee on 5/27/2026.
- 9.7. Peters request for Sauk River WBIF funding approved by steering committee on 5/27/2026.
- 9.8. John request for Sauk River WBIF funding approved by steering committee on 5/27/2026.
- 9.9. Pheasants Forever Local Cooperative Agreement was approved on 5/19/ 2026 by the Commissioners
- 9.10 Remaining FY 24 feedlot funds scheduled to cover wage reimbursement to County and truck purchase.
- 9.11 Contract for AIS inspection services was rescinded via notice by Waterguards on June 3, 2026.
- 9.12 Project Status Update for 2026 (in folders)
- 9.13 District Manager will also miss August Board Meeting due to birth of grandbaby #2- little girl

The next regularly scheduled meeting for the Todd SWCD Board of Supervisors will be Thursday, July 9, 2026, at 8:30 a.m. at the Historic Courthouse in the Commissioner's Board Room located at 215 1st Avenue South, Long Prairie, MN 56347.



Minutes from May 14, 2026 Regular Board Meeting

The meeting was held in person at Todd County Historic Courthouse, Commissioner's Board Room, located at 215 1st Ave S, Long Prairie, MN 56347.

Chairperson Katterhagen called the Thursday, May 14, 2026 meeting to order at 8:30 a.m.

The Pledge of Allegiance was recited.

Call for Introductions.

Board members present in person were: Dale Katterhagen, Barb James, Tom Williamson, Larry Bebus and Wayne Wendel. James joined the meeting at 8:35 a.m.

Others present in person were: Deja Anton, District Manager, Sarah Katterhagen, Program Coordinator, Josh Votruba, Conservation Technician, Kasen Christiansen, Conservation Technician, Alyssa Scheve, Conservation Technician, Jessica Moore, Conservation Technician, Luke Thoma, NRCS, Laura Kipf, Pheasants Forever, and Brett Arne, BWSR.

Approval of Agenda: Katterhagen asked if there were any additions or corrections to the agenda. Wendel made a motion, seconded by Williamson, to accept the revised agenda for the regular May 14, 2026 meeting.

- Remove Item: 3.3. Reifer request for cost share funding
- Add Item: 3.6. John request for Sauk River Watershed WBIF funding for a shoreline project
- Add Item: 3.7. Estrada request for Long Prairie WBIF or conservation contracts funding for a pit closure project
- Add Item: 3.8. Zimmer request for Long Prairie WBIF funds, riparian funds, conservation contracts funding for a manure waste transfer scape lane, stacking slab and heavy use protection area
- Remove Item: 5.3. W. Sobiech request for payment
- Remove Item: 5.4. G. Sobiech request for payment
- Add Item: 7.6. Transparency discussion and public perception
- Add Item: 9.10. Press Release about SWCD Elections.

Affirmative: Katterhagen, Williamson, Bebus and Wendel. Motion Carried.

James joined the meeting.



WHERE THE FOREST MEETS THE PRAIRIE

Todd County

• MINNESOTA • EST. 1855 •

SOIL AND WATER CONSERVATION DISTRICT

215 1st Avenue South, Suite 104

Long Prairie, MN 56347

Phone: 320-732-2644 Fax: 320-732-4803

Approval of Minutes: Bebus made a motion, seconded by Williamson to approve the April 9, 2026 regular board meeting minutes as distributed, with minor correction of adding “14th” as the next meeting date.

Affirmative: Katterhagen, James, Williamson, Bebus and Wendel. Motion Carried.

Financial Report: Wendel made a motion, seconded by Williamson to accept April 2026 Treasurer’s Report with receipts totaling \$49,320.39 and disbursements totaling \$258,944.68.

Discussion: S. Katterhagen reviewed the revenues, disbursements and the adjustments.

Affirmative: Katterhagen, James, Williamson, Bebus and Wendel. Motion Carried.

Call for Conflict of Interest: Katterhagen declared conflict of interest on item 9.7 – Informational item regarding Katterhagen amendment request for additional funds.

Celebration:

20,000 bareroot trees were sold for 2026 tree sales. Anton reported the team did an excellent job preparing orders and serving customers. Many customers remarked on the overall appearance and size of trees coming from Schumacher’s Nursery as opposed to the DNR. Anton thanked Supervisor Bebus for representing the SWCD Board at this event.

Congratulations to Alyssa Scheve on her transfer to the Farm Conservationist- Feedlot Position. She is off to a good start!

Thank you to Laura Kipf, Pheasants Forever, for helping pack trees and offering customer assistance on conservation easements and other programs during our tree event!

The office has received nice responses regarding the Annual SWCD Annual Report.

NRCS Report

Thoma provided handouts regarding the Local Work Meeting. He reminded the board the Local Group Meeting is their meeting and they can run the meeting however they want. Katterhagen would like to have solar gardens discussed at the Local Group Meeting. Thoma advised bringing this topic directly to the upcoming meeting.

Decisions needed for encumbering cost share funds

Williamson made a motion, seconded by Bebus to approve encumbering C24-0198 Mississippi Brained WBIF funds for Bebejo Ranch, LLC, C#20260514-3.1 in the amount of \$1,200 for a forest stewardship plan.

Affirmative: Katterhagen, James, Williamson, Bebus and Wendel. Motion Carried.

James made a motion, seconded by Williamson to approve encumbering C25-0310 Crow Wing WBIF, FY26 County Riparian and P26-0856 Soil Health Delivery as potential sources of funding for Derek Wiese,



WHERE THE FOREST MEETS THE PRAIRIE

Todd County

• MINNESOTA • EST. 1855 •

SOIL AND WATER CONSERVATION DISTRICT

215 1st Avenue South, Suite 104

Long Prairie, MN 56347

Phone: 320-732-2644 Fax: 320-732-4803

C#20260514-3.2 in the amount of \$13,606.16 for a livestock pipeline and rotational grazing project. Affirmative: Katterhagen, James, Williamson, Bebus and Wendel. Motion Carried.

Reifer request for funding was removed from the agenda.

Bebus made a motion, seconded by Williamson to approve encumbering C24-0088 Sauk River WBIF funds for Peters, C#20260514-3.4 in the amount of \$17,779.50 for shoreline project pending Sauk River steering committee approval. Affirmative: Katterhagen, James, Williamson, Bebus and Wendel. Motion Carried.

Williamson made a motion, seconded by Wendel to approve encumbering C24-0088 Sauk River WBIF funds for Ron and Stacy Host, C#20260514-3.5 in the amount of \$15,285.19 for a shoreline project pending Sauk River steering committee approval. Affirmative: Katterhagen, James, Williamson, Bebus and Wendel. Motion Carried.

James made a motion, seconded by Bebus to approve encumbering C24-0088 Sauk River WBIF funds for John, C#20260514-3.6 in the amount of \$22,196.25 for a shoreline project pending Sauk River steering committee approval. Affirmative: Katterhagen, James, Williamson, Bebus and Wendel. Motion Carried.

James made a motion, seconded by Bebus to approve encumbering FY26/27 Conservation Contract funds for Estrada, C#20260514-3.7 in the amount of \$28,653.08 for a pit closure project. Affirmative: Katterhagen, James, Williamson, Bebus and Wendel. Motion Carried.

Bebus made a motion, seconded by Wendel to approve encumbering C23-3483 Long Prairie WBIF, C25-0196 Long Prairie WBIF, FY24 County Riparian Aid, FY26/27 Conservation Contracts funds for Neil Zimmer, C#20260514-3.8 for manure waste transfer scape lane, stacking slab and heavy use protection in the amount of \$191,111.08 pending Long Prairie WBIF steering committee. Affirmative: Katterhagen, James, Williamson, Bebus and Wendel. Motion Carried.

Decisions needed for cost share contract amendments

See informational.

Decision needed for payment of cost share funds

Williamson made a motion, seconded by James to approve payment of P23-2945 Long Prairie LCCMR funds for Gregory Mick, C#2026.01.08-3.1 in the amount of \$622.50 for a forest stewardship plan. Affirmative: Katterhagen, James, Williamson, Bebus and Wendel. Motion Carried.

Bebus made a motion, seconded by Williamson to approve payment of P23-2945 Long Prairie LCCMR funds for Richard Sobiech, C#2026.03.12-3.7 in the amount of \$1,200 for a forest stewardship plan. Affirmative: Katterhagen, James, Williamson, Bebus and Wendel. Motion Carried.

Wayne Sobiech, C#2026.03.12-3.6 request for payment was removed.

Gerard Sobiech, C#2026.03.12-3.8 request for payment was removed.



James made a motion, seconded by Wendel to approve payment of P23-2945 Long Prairie LCCMR funds for Jay Ellsworth, C#2026.04.09-3.1 in the amount of \$825 for a forest stewardship plan. Affirmative: Katterhagen, James, Williamson, Bebus and Wendel. Motion Carried.

Votruba, Scheve, Christiansen, and Kipf left the meeting at 9:45 a.m.

Decisions needed for operations

Wendel made a motion, seconded by Bebus to accept the 2026 Feedlot meeting donations in the amount of \$3,250 ending April 30, 2026. Affirmative: Katterhagen, James, Williamson, Bebus and Wendel. Motion Carried.

Bebus made a motion, seconded by James to accept the 2025 Todd SWCD Audit Report. Affirmative: Katterhagen, James, Williamson, Bebus and Wendel. Motion Carried.

James made a motion, seconded by Williamson to approve the revised monitoring plan for buffer compliance tracking. Affirmative: Katterhagen, James, Williamson, Bebus and Wendel. Motion Carried.

Wendel made a motion, seconded by James to approve the suggested revisions to Resolution Authorizing Named staff to conduct spot checks by removing Dylan Pratt and adding Jessica Moore, R#20250508-6.6. Affirmative: Katterhagen, James, Williamson, Bebus and Wendel. Motion Carried.

James made a motion, seconded by Bebus to approve suggested edits to resolution Establishing Landowner In-kind Rates, R#2024.0808-5.3 of removing hourly from the title and in the second whereas clause. Affirmative: Katterhagen, James, Williamson, Bebus and Wendel. Motion Carried.

James made a motion, seconded by Williamson to approve suggested edits to the Cost share applicant assurance statement attached to resolution requiring cost share applicants to have no current record of property taxes in Arrears (2023.06.13-3.6) of changing title of resolution to include the words Quality Assurance and update the Quality Assurance Measure to include statement about prevailing wage. Affirmative: Katterhagen, James, Williamson, Bebus and Wendel. Motion Carried.

Anton will make changes to the resolutions and will have the chair sign at the next board meeting.

Discussion items

Public Perception/SWCD Board: Record Keeping Requirements per request of Chair. Moore gave a presentation about manure record tracking and provided example of the office's blue postcard template that landowners can use for manure record keeping.

Moore left the meeting at 10:15 a.m.

Annual Review of Todd County and SWCD Agreement: Board reviewed the agreement and at this time no concerns or changes with the agreement with the County.



Review of Guidance policy on assisting staff with per diem payment determinations: Board reviewed the guidance policy.

Review of Resolution for Roles of Newly Elected Supervisors (20210601). Board reviewed the resolution.

Review of Local Cooperative Agreement between Todd County Pheasants Forever. Anton informed the board the County Commissioner's will be reviewing and approving the agreement. Anton informed the board the Todd SWCD provides the required match for the grant.

Transparency and Discussion and Public Perception: Anton updated the Board on recent public inquiries and complaints. Key topics included calls regarding Supervisors receiving cost-share funding, supervisor activities on personal properties, and compliance complaints regarding the 2025 Conservationist Farmer Recipient (a formal letter of warning will be sent). Anton also noted that a letter of warning regarding a cost-share contract breach was recently issued to Fairy Lakes.

Contracts and documents approved by the Chair

See informational below.

Informational

Radio Show: Broadcasts continue every second Friday of the month.

Sauk River Watershed Policy Meeting: Scheduled for May 21, 2026.

Mississippi Brainerd Policy Meeting: Scheduled for June 1, 2026.

Area II Meeting: Scheduled for June 17, 2026 (RSVP deadline is May 28, 2026).

Local Work Group Meeting and Tour: Scheduled for June 18, 2026.

Office Closure: The SWCD office will be closed on June 19, 2026.

Contract Amendment (Conflict of Interest Handling): Vice-Chair Barb James presided over and authorized an amendment to cost-share contract #2026.03.12-3.5 due to Chairperson Katterhagen's declared conflict of interest. The amendment approves an increase of \$265.67 (raising the total authorized amount from \$703.72 to \$969.39) to cover mulch protection for tree and shrub establishment.

Grant Execution: D. Anton finalized and signed a \$25,000 grant agreement with The Nature Conservancy (TNC) and the U.S. Fish and Wildlife Service (USFWS) to fund wetland restoration projects, following Board authorization granted at the April meeting.

Elections Press Release: A formal press release regarding the upcoming SWCD Board of Supervisors elections has been submitted to local newspapers.



The next meeting scheduled for the Todd SWCD Board of Supervisors will be Thursday, June 11, 2026 at 8:30 a.m. The meeting will take place at the Historic Courthouse in the Commissioner’s Board Room located at 215 1st Avenue South, Long Prairie, MN 56347.

Chairperson Katterhagen adjourned the meeting at 10:55 a.m.

Sarah Katterhagen, Minute Preparer

Date

Deja Anton, SWCD District Manager

Date

Tom Williamson, Secretary

Date

DRAFT

**TODD SOIL & WATER CONSERVATION DISTRICT
SWCD TREASURER'S MONTHLY REPORT
PROGRAM SUMMARY**

PROGRAM	CASH BALANCE 5/1/2026	RECEIPTS	DISBURSEMENTS	ADJUSTMENTS	CASH BALANCE 5/31/2026
District Savings Account	\$ 281,174.22				\$ 281,174.22
Change Fund	\$ 20.00				\$ 20.00
General/Misc. Revenue/MCIT	\$ 2,735.78				\$ 2,735.78
Tree Program	\$ 45,356.43	\$ 5,758.00	\$ 33,013.65		\$ 18,100.78
Todd County Allocation	\$ (5,000.00)				\$ (5,000.00)
District Operations	\$ (3,138.85)		\$ 973.30		\$ (4,112.15)
MPCA Feedlot Program/County Program - FY25	\$ 47,554.59				\$ 47,554.59
MPCA Feedlot Program/County Program - FY26	\$ 24,434.15		\$ 473.00		\$ 23,961.15
County Appropriation for Feedlot Program	\$ 43,910.02				\$ 43,910.02
Feedlot Performance funds	\$ 12,368.14				\$ 12,368.14
NRBG Water Plan Funds/County Program - FY26	\$ 6,343.05				\$ 6,343.05
Water Plan Levy	\$ 1,165.62				\$ 1,165.62
NRBG Wetland Program Funds/County Program - FY26	\$ -				\$ -
County Appropriation for Wetland Program	\$ (3,029.58)				\$ (3,029.58)
Todd County AIS Program/County Program	\$ 69,752.67		\$ 6,203.25		\$ 63,549.42
Todd County Riparian AID Education	\$ 6,769.75		\$ 160.46		\$ 6,609.29
Todd County Riparian AID Cost Share Program - 2024	\$ 45,143.22				\$ 45,143.22
Todd County Riparian AID Cost Share Program - 2025	\$ -				\$ -
Todd County Riparian AID Cost Share Program - 2026	\$ 65,789.00				\$ 65,789.00
MN State Grant	\$ 1,311.22	\$ 4,708.25			\$ 6,019.47
Ob Well Program	\$ (3,900.00)				\$ (3,900.00)
C24-0174 Soil Health Practitioner Grant / Staffing	\$ 172,271.15				\$ 172,271.15
2025 MN Grant SWCD AID	\$ 6,927.44		\$ 2,600.35		\$ 4,327.09
2026 MN Grant SWCD AID	\$ 137,696.12				\$ 137,696.12
FY2026 Buffer Implementation	\$ 15,835.12				\$ 15,835.12
FY2026 / 2027 Conservation Contracts	\$ 38,768.00				\$ 38,768.00
FY2026 / 2027 Conservation Delivery	\$ 17,956.17				\$ 17,956.17
P25-0856 - 2026 Soil Health	\$ 20,000.00				\$ 20,000.00
P25-0558 MN Soil Health Delivery Grant C/S	\$ 9,816.33				\$ 9,816.33
P25-0558 MN Soil Health Delivery Grant Project Development	\$ (2,749.06)		\$ 946.00		\$ (3,695.06)
P25-0558 MN Soil Health Delivery Grant Technical Assistance	\$ (1,943.31)				\$ (1,943.31)
P26-0058 2026 RCPP Soil Health Practices Technical Assistance	\$ 25,891.88				\$ 25,891.88
P26-0058 2026 RCPP Soil Health Practices Cost Share	\$ 150,000.00				\$ 150,000.00
C23-3483 Long Prairie Collaborative WBIF 2023 Admin	\$ 13,388.21		\$ 7,021.70		\$ 6,366.51
C23-3483 Long Prairie Collaborative WBIF 2023 PD	\$ 45,687.97		\$ 7,013.98		\$ 38,673.99
C23-3483 Long Prairie Collaborative WBIF 2023 TA	\$ 25,892.30		\$ 9,129.68		\$ 16,762.62
C23-3483 Long Prairie Collaborative WBIF 2023 CS	\$ 218,519.20				\$ 218,519.20
P25-0471 2025 - Long Prairie Watershed CRP Incentive Grant	\$ -				\$ -
C25-0196 Long Prairie Collaborative WBIF 2025 Admin	\$ 78,044.62		\$ 846.82		\$ 77,197.80
C25-0196 Long Prairie Collaborative WBIF 2025 PD	\$ 105,661.33		\$ 1,514.45		\$ 104,146.88
C25-0196 Long Prairie Collaborative WBIF 2025 TA	\$ 95,347.82		\$ 10,047.26		\$ 85,300.56
C25-0196 Long Prairie Collaborative WBIF 2025 CS	\$ 53,870.04				\$ 53,870.04
C25-0169 Big Swan Phosphorus Grant Tier 1	\$ 50,675.23				\$ 50,675.23
Red Eye One Watershed, One Plan Reimbursement - Grant #2	\$ -	\$ 426.53	\$ 2,728.90		\$ (2,302.37)
C25-0118 Red Eye One Watershed, One Plan Reimbursement - Grant #3	\$ (5,603.33)				\$ (5,603.33)
Sauk River One Watershed, One Plan Technical Reimbursement Grant #1	\$ (2,065.74)		\$ 5,091.00		\$ (7,156.74)
Sauk River One Watershed, One Plan CS Reimbursement Grant #1	\$ -				\$ -
C24-0088 Sauk River One Watershed, One Plan - Reimbursement Grant #2	\$ (51,156.98)				\$ (51,156.98)
P25-0821 CRP Sauk River Watershed Incentive Grant	\$ (24,548.00)				\$ (24,548.00)
C24-0198 Mississippi River One Watershed - Implementation	\$ (47,328.67)		\$ 2,709.24		\$ (50,037.91)
C25-0310 Crow Wing WBIF Phase #1	\$ (3,848.25)				\$ (3,848.25)
FY2023 Long Prairie Watershed LCCMR Grant	\$ (6,088.63)		\$ 5,657.50		\$ (11,746.13)
FY2024 Get Out More Hewitt Dam Removal Project	\$ (158.64)		\$ 269.73		\$ (428.37)
MN Ag Water Program/Partnership- Reimbursement	\$ (3,975.92)	\$ 750.00	\$ 250.00		\$ (3,475.92)
WCTSA Nutrient Management/Partnership Reimbursement	\$ -				\$ -
TOTAL	\$ 1,771,541.83	\$ 11,642.78	\$ 96,650.27	\$ -	\$ 1,686,534.34

Prepared by: Sarah Katterhagen, Program Coordinator

Date

Reviewed by: Deja Anton, SWCD District Manager

Date

Larry Bebus, District Treasurer

Date

**** Todd County ****



ACCOUNT ACTIVITY REPORT

Page Break Option: 1 1 - Page Break by FUND
2 - Page Break by DEPT

Print Service Dates: No

Sort: 1st: 2nd 3rd 4th 5th 6th
G D T N M W

F - G/L Object Within Fund Number
G - G/L Account Number
P - G/L Object Within Dept Number
D - Transaction Date
M - G/L Month & Year
N - Vendor/Payer Name
T - Type Of Transaction
W - Receipt/Warrant Number

Range Subtotals: 1 1 - No Subtotals
2 - Detail and Subtotals by OBJECT Range
3 - Subtotals only by OBJECT Range
4 - Account Totals and Subtotals by OBJECT Range
5 - Account Totals and Subtotals by PROGRAM Range

Report Basis: 1 Cash Only This Basis?: No

Print YTD Totals: No Type of Report: 1 1 - DETAIL
2 - ABBREVIATED

Specific Dates: From: 05/01/2026 Thru: 05/31/2026

Comment:
FUND Range From 79 Thru 79
DEPT Range From 603 Thru 603



Tran	G/L	Receipt/Warrant	Invoice	Accr								
SC	Type	Vendor	Mont	NUMBER	DATE	Seq	AMOUNT	Description / Service Dates	Number	Cd	Basis	R1R2
DEPT 603 - S&W (FEEDLOT-CO MATCH)												
PROGRAM 000 - PROGRAM												
79-603-000-0000-5301 - MN GRANTS (GENERAL/AGENCY PARTNERS)												
RE	RE	STATE OF MN - DD	05/2026	150912	05/14/2026	222	2,500.00-	77-01-24-26-EA				1
RE	RE	State of MN - DD	05/2026	151011	05/21/2026	222	2,208.25-	77-01-24-26-title				1
79-603-000-0000-5301 - MN GRANTS (GENERAL/AGENCY)							Total	4,708.25-				
79-603-000-0000-5530 - FEE - DEPT PRJ SALES												
RE	RE	Todd County Soil and Water	05/2026	150761	05/01/2026	222	214.75-	100 Trees	Sonja Pearson			1
RE	RE	Todd County Soil and Water	05/2026	150761	05/01/2026	222	107.38-	50 Trees	Justin Lindner			1
RE	RE	Todd County Soil and Water	05/2026	150761	05/01/2026	222	161.06-	75 Trees	Katie Schultz			1
RE	RE	Todd County Soil and Water	05/2026	150761	05/01/2026	222	161.07-	75 Trees	Lyle Katterhagen			1
RE	RE	Todd County Soil and Water	05/2026	150761	05/01/2026	222	53.69-	50 Trees	Don Wienhold			1
RE	RE	Todd County Soil and Water	05/2026	150761	05/01/2026	222	53.69-	25 Trees	Mike Bebeau			1
RE	RE	Todd County Soil and Water	05/2026	150761	05/01/2026	222	53.69-	25 Trees	Tracy Sellnow			1
RE	RE	Todd County Soil and Water	05/2026	150773	05/05/2026	222	53.69-	25 Trees	Heather Olson			1
RE	RE	Todd County Soil and Water	05/2026	150773	05/05/2026	222	53.69-	25 Trees	Brian Katterhagen			1
RE	RE	Todd County Soil and Water	05/2026	150773	05/05/2026	222	53.69-	25 Trees	Rich Lukasavitz			1
RE	RE	Todd County Soil and Water	05/2026	150773	05/05/2026	222	53.69-	25 Trees	Joe Kaspari			1
RE	RE	Todd County Soil and Water	05/2026	150773	05/05/2026	222	53.69-	25 Trees	Gennifer Anderson			1
RE	RE	Todd County Soil and Water	05/2026	150773	05/05/2026	222	53.69-	25 Trees	Linus Koval			1
RE	RE	Todd County Soil and Water	05/2026	150773	05/05/2026	222	53.69-	25 Trees	Jane Stienmetz			1
RE	RE	Todd County Soil and Water	05/2026	150773	05/05/2026	222	53.69-	25 Trees	Craig Weinmann			1
RE	RE	Todd County Soil and Water	05/2026	150773	05/05/2026	222	161.06-	75 Trees	Brad Twardowski			1
RE	RE	Todd County Soil and Water	05/2026	150773	05/05/2026	222	322.13-	20 Potted	Brad Twardowski			1
RE	RE	Todd County Soil and Water	05/2026	150773	05/05/2026	222	53.69-	50 Trees	Aaron Baufield			1
RE	RE	Todd County Soil and Water	05/2026	150773	05/05/2026	222	107.40-	50 Trees	Jack Mechels			1
RE	RE	Todd County Soil and Water	05/2026	150773	05/05/2026	222	53.69-	25 Trees	Mike Sudbeck			1
RE	RE	Todd County Soil and Water	05/2026	150773	05/05/2026	222	429.50-	200 Trees	Andy Swartzentruber			1
RE	RE	Todd County Soil and Water	05/2026	150773	05/05/2026	222	107.38-	50 Trees	Lawrence Merck			1
RE	RE	Todd County Soil and Water	05/2026	150773	05/05/2026	222	375.81-	175 Trees	Marcus Meiners			1



Tran	SC	Type	Vendor	G/L	Receipt/Warrant	Seq	AMOUNT	Description / Service Dates	Invoice	Accr	R1R2
				Mont	NUMBER	DATE			Number	Cd	Basis
79-603-000-0000-5530 - FEE - DEPT PRJ SALES											
RE	RE		Todd County Soil and Water	05/2026	150773	05/05/2026	222	268.44 - 125 Trees	Christi Jenc		1
RE	RE		Todd County Soil and Water	05/2026	150773	05/05/2026	222	53.69 - 25 Trees	Thomas Henrich		1
RE	RE		Todd County Soil and Water	05/2026	150773	05/05/2026	222	53.69 - 25 Trees	Nathan Deyle		1
RE	RE		Todd County Soil and Water	05/2026	150874	05/11/2026	222	53.69 - 25 Trees	Nickolas Samuelson		1
RE	RE		Todd County Soil and Water	05/2026	150874	05/11/2026	222	40.00 - 25 Trees	Lance Quam		1
RE	RE		Todd County Soil and Water	05/2026	150874	05/11/2026	222	13.69 - FEE - DEPT PRJ SALES	Lance Quam		1
RE	RE		Todd County Soil and Water	05/2026	150874	05/11/2026	222	214.75 - 100 Trees	Harold Holst		1
RE	RE		Todd County Soil and Water	05/2026	150874	05/11/2026	222	107.38 - 50 Trees	Morgan Krier		1
RE	RE		Todd County Soil and Water	05/2026	150874	05/11/2026	222	912.69 - 425 Trees	Steven Greenwaldt		1
RE	RE		Todd County Soil and Water	05/2026	150874	05/11/2026	222	107.38 - 50 Trees	Kenneth Voller		1
RE	RE		Todd County Soil and Water	05/2026	150874	05/11/2026	222	217.44 - Vented Tubes-50	Joel Stang		1
RE	RE		Todd County Soil and Water	05/2026	150874	05/11/2026	222	214.75 - 200 Trees	Kristi Balfanz		1
RE	RE		Todd County Soil and Water	05/2026	150874	05/11/2026	222	322.13 - 150 Trees	Tim Kuchinski		1
RE	RE		Todd County Soil and Water	05/2026	150874	05/11/2026	222	93.95 - 25 Regular Tubes	Richard Sieben		1
RE	RE		Todd County Soil and Water	05/2026	150874	05/11/2026	222	53.69 - 25 Trees	Kevin Rousseau		1
RE	RE		Todd County Soil and Water	05/2026	151037	05/22/2026	222	40.25 - 25 Trees-reduce rate	Kasen Christiansen		1
RE	RE		Todd County Soil and Water	05/2026	151037	05/22/2026	222	37.50 - 25 Trees at cost/exempt	Douglas SWCD		1
RE	RE		Todd County Soil and Water	05/2026	151037	05/22/2026	222	107.38 - 50 Trees	Jennifer Anderson		1
79-603-000-0000-5530 - FEE - DEPT PRJ SALES							Total	5,758.00 -			
79-603-000-0000-6103 - PER DIEM											
DI	DI		12811-BEBUS/LARRY	05/2026	246410	05/18/2026	333	125.00 SWCD Board Meeting	5/14/26		1
DI	DI		12811-BEBUS/LARRY	05/2026	246410	05/18/2026	333	125.00 Mississippi/Brainerd Meeting	4/20/26		1
DI	DI		17255-JAMES/BARBARA	05/2026	906041	05/18/2026	333	125.00 SWCD Board Meeting	5/14/26		1
DI	DI		5981-KATTERHAGEN/DALE	05/2026	906042	05/18/2026	333	125.00 SWCD Board Meeting	5/14/26		1
DI	DI		23002-WENDEL/WAYNE	05/2026	246448	05/18/2026	333	125.00 SWCD Board Meeting	5/14/26		1
DI	DI		9450-WILLIAMSON/THOMAS	05/2026	906046	05/18/2026	333	125.00 SWCD Board Meeting	5/14/26		1
79-603-000-0000-6103 - PER DIEM							Total	750.00			
79-603-000-0000-6331 - TRAVEL AND EXPENSE (MILEAGE)											
DI	DI		12811-BEBUS/LARRY	05/2026	246410	05/18/2026	333	27.55 Mileage	5/14/26		1
DI	DI		12811-BEBUS/LARRY	05/2026	246410	05/18/2026	333	100.05 Mileage	4/20/26		1



Tran	G/L	Receipt/Warrant	Invoice	Accr								
SC	Type	Vendor	Mont	NUMBER	DATE	Seq	AMOUNT	Description / Service Dates	Number	Cd	Basis	R1R2
79-603-000-0000-6331 - TRAVEL AND EXPENSE (MILEAGE)												
DI	DI	17255-JAMES/BARBARA	05/2026	906041	05/18/2026	333	27.55	Mileage	5/14/26			1
DI	DI	5981-KATTERHAGEN/DALE	05/2026	906042	05/18/2026	333	20.30	Mileage	5/14/26			1
DI	DI	23002-WENDEL/WAYNE	05/2026	246448	05/18/2026	333	27.55	Mileage	5/14/26			1
DI	DI	9450-WILLIAMSON/THOMAS	05/2026	906046	05/18/2026	333	20.30	Mileage	5/14/26			1
79-603-000-0000-6331 - TRAVEL AND EXPENSE (MILEAGE)						Total	223.30					
79-603-000-0000-6365 - EXPENSES - DEPT. PROJECTS												
DI	DI	15290-AMAZON CAPITAL SERVICES	05/2026	906005	05/04/2026	333	107.96	400ZipTiesForTreeSalePacking	1LRW-MJNV-D3FY			1
DI	DI	9900-MORRISON SWCD	05/2026	246393	05/11/2026	333	72.80	52 Tree Wraps	0410202601			1
DI	DI	9899-SCHUMACHER'S NURSERY & BERRY FARM INC	05/2026	246397	05/11/2026	333	1,000.00	2026 Trucking - Tree Delivery	INV 26129			1
DI	DI	9899-SCHUMACHER'S NURSERY & BERRY FARM INC	05/2026	246397	05/11/2026	333	27,747.50	20,000 18-24" Bareroot Trees	INV 26129			1
DI	DI	9899-SCHUMACHER'S NURSERY & BERRY FARM INC	05/2026	246397	05/11/2026	333	2,694.70	285 One Gallon Potted Stock	INV 26129			1
DI	DI	18239-MINKE/NATHAN	05/2026	246433	05/18/2026	333	53.69	Reimb for 25 Norway Pines				1
DI	DI	14048-MINNESOTA NATIVE LANDSCAPES INC	05/2026	246482	05/26/2026	333	1,337.00	PlantPlugsfor2026Season	1382			1
79-603-000-0000-6365 - EXPENSES - DEPT. PROJECTS						Total	33,013.65					
PROGRAM 000 -						PROGRAM Total	23,520.70					
PROGRAM 517 - FY2023 LCCMR PILOT TREE PLANTING PROJECT												
79-603-517-0000-6810 - PROJ DEV EXP-FY23 LCCMR PILOT TREE-LP												
DI	DI	16276-KANATI LAND MANAGEMENT	05/2026	246380	05/11/2026	333	2,000.00	TreePlantingClassPrep/Presenta	2512			1
DI	DI	12016-LONG PRAIRIE LEADER	05/2026	246479	05/26/2026	333	1,182.50	SWCD Newsletter/Annual Report	20122			1
79-603-517-0000-6810 - PROJ DEV EXP-FY23 LCCMR PILOT TREE-LP						Total	3,182.50					
79-603-517-0000-6849 - TECH ASST EXP-FY23 LCCMR PILOT TREE-L												
DI	DI	18237-ELLSWORTH/JAY AND TAMARA	05/2026	246426	05/18/2026	333	825.00	CostShareForestStewardshipPlan				1
DI	DI	18233-SOBIECH/GERARD	05/2026	246442	05/18/2026	333	525.00	CostShareForestStewardshipPlan				1
DI	DI	18234-SOBIECH/WAYNE	05/2026	246443	05/18/2026	333	1,125.00	CostShareForestStewardshipPlan				1
79-603-517-0000-6849 - TECH ASST EXP-FY23 LCCMR PILOT TREE-L						Total	2,475.00					
PROGRAM 517 - FY2023 LCCMR PILOT TREE PLANTING PROJECT						Total	5,657.50					
PROGRAM 518 - C23-3483 LP COLLABORATIVE FY23 WBI												
79-603-518-0000-6806 - ADMIN EXP-C23-3483 LP COLLABORATIVE												



Tran	G/L	Receipt/Warrant	Invoice	Accr								
SC	Type	Vendor	Mont	NUMBER	DATE	Seq	AMOUNT	Description / Service Dates	Number	Cd	Basis	R1R2
		79-603-518-0000-6806 - ADMIN EXP-C23-3483 LP COLLABORATIVE										
DI	DI	11431-DOUGLAS SWCD	05/2026	246341	05/04/2026	333	7,021.70	2026 Q1 Douglas SWCD Admin				1
		79-603-518-0000-6806 - ADMIN EXP-C23-3483 LP				Total	7,021.70					
		79-603-518-0000-6810 - PRJ DEV EXP-C23-3483 LP COLLABORATIVI										
DI	DI	11431-DOUGLAS SWCD	05/2026	246341	05/04/2026	333	1,404.48	2026 Q1 Douglas SWCD ProjDevel				1
DI	DI	20400-THE LAMAR COMPANIES	05/2026	246360	05/04/2026	333	315.00	Drinking Water Billboard	118153128			1
DI	DI	20400-THE LAMAR COMPANIES	05/2026	246360	05/04/2026	333	600.00	Installation for New Board	118153128			1
DI	DI	9594-US BANK	05/2026	1349	05/22/2026	333	648.00	ZOHO - Workdrive				1
DI	DI	12016-LONG PRAIRIE LEADER	05/2026	246479	05/26/2026	333	2,627.50	CommercialPrint-SpanishBooks	20175			1
DI	DI	12016-LONG PRAIRIE LEADER	05/2026	246479	05/26/2026	333	1,419.00	SWCD Newsletter/Annual Report	20122			1
		79-603-518-0000-6810 - PRJ DEV EXP-C23-3483 LP				Total	7,013.98					
		79-603-518-0000-6849 - TECH ASSIST EXP-C23-3483 LP COLLABOR,										
DI	DI	11167-WEST CENTRAL TECH SERVICE AREA	05/2026	246403	05/11/2026	333	9,129.68	Tech Assist WCTSA	26-25			1
		79-603-518-0000-6849 - TECH ASSIST EXP-C23-3483 LP				Total	9,129.68					
		PROGRAM 518 - C23-3483 LP COLLABORATIVE FY23 WBIF				Total	23,165.36					
		PROGRAM 519 - SWCD AID										
		79-603-519-0000-6839 - PROMOTIONAL EXPENSE-SWCD AID										
DI	DI	13350-BENNING PRINTING & PUBLISHING	05/2026	246367	05/11/2026	333	485.00	2026 Resource Guide	Todd Soil & Water			1
DI	DI	12016-LONG PRAIRIE LEADER	05/2026	246479	05/26/2026	333	2,115.35	SWCD Newsletter/Annual Report	20122			1
		79-603-519-0000-6839 - PROMOTIONAL EXPENSE-SWCD AID				Total	2,600.35					
		PROGRAM 519 - SWCD AID				Total	2,600.35					
		PROGRAM 526 - C24-0198 MISS-BRAINERD CWMP IMPLEMENTATI										
		79-603-526-0000-6810 - PRJ DEVELOPMENT EXP:MISS-BRAINERD CW										
DI	DI	12016-LONG PRAIRIE LEADER	05/2026	246479	05/26/2026	333	1,419.00	SWCD Newsletter/Annual Report	20122			1
		79-603-526-0000-6810 - PRJ DEVELOPMENT EXP:MISS-BRAINERD				Total	1,419.00					
		79-603-526-0000-6849 - TECHNICAL ASSIST.EXP:MISS-BRAINERD CW										
DI	DI	11167-WEST CENTRAL TECH SERVICE AREA	05/2026	246403	05/11/2026	333	1,290.24	Tech Assist WCTSA	26-25			1
		79-603-526-0000-6849 - TECHNICAL ASSIST.EXP:MISS-BRAINERD				Total	1,290.24					
		PROGRAM 526 - C24-0198 MISS-BRAINERD CWMP IMPLEMENTATI				Total	2,709.24					



Tran	G/L	Receipt/Warrant	Invoice	Accr								
SC	Type	Vendor	Mont	NUMBER	DATE	Seq	AMOUNT	Description / Service Dates	Number	Cd	Basis	R1R2
PROGRAM 527 - P25-0558 SOIL HEALTH DELIVERY												
79-603-527-0000-6810 - PRJ DEVELOPMENT EXP:P25-0558SOIL HLTI												
DI	DI	12016-LONG PRAIRIE LEADER	05/2026	246479	05/26/2026	333	946.00	SWCD Newsletter/Annual Report	20122			1
							946.00	Total				
							946.00	PROGRAM 527 - P25-0558 SOIL HEALTH DELIVERY Total				
PROGRAM 528 - C25-0196 LONG PRAIRIE COLLABTV FY25 WBIF												
79-603-528-0000-6806 - ADMINISTRATION EXP-C25-0196 LP COLLA												
DI	DI	9900-MORRISON SWCD	05/2026	246393	05/11/2026	333	846.82	Q1 Fiscal/Administrative Hours	LPWBIF2506			1
							846.82	Total				
79-603-528-0000-6810 - PRJ DEVELOPMENT EXP-C25-0196 LP COLL												
DI	DI	9900-MORRISON SWCD	05/2026	246393	05/11/2026	333	4,968.00	Q1 Project Development Hours	LPWBIF2506			1
DI	DI	9900-MORRISON SWCD	05/2026	246393	05/11/2026	333	4,968.00-	Incorrect Account Number				1
DI	DI	9900-MORRISON SWCD	05/2026	246393	05/11/2026	333	4,968.00	Q1 Technical/Engineering Hours	LPWBIF2506			1
DI	DI	9900-MORRISON SWCD	05/2026	246393	05/11/2026	333	1,514.45	Q1 Project Development Hours	LPWBIF2506			1
DI	DI	9900-MORRISON SWCD	05/2026	246393	05/11/2026	333	4,968.00-	Incorrect Account Number				1
							1,514.45	Total				
79-603-528-0000-6849 - TECHNICAL ASSIST.EXP-C25-0196 LP COLL												
DI	DI	11431-DOUGLAS SWCD	05/2026	246341	05/04/2026	333	5,079.26	WCTSA Staff Time Q4 2025				1
DI	DI	9900-MORRISON SWCD	05/2026	246393	05/11/2026	333	1,514.45	Q1 Technical/Engineering Hours	LPWBIF2506			1
DI	DI	9900-MORRISON SWCD	05/2026	246393	05/11/2026	333	1,514.45-	Incorrect Account Number				1
DI	DI	9900-MORRISON SWCD	05/2026	246393	05/11/2026	333	4,968.00	Q1 Technical/Engineering Hours	LPWBIF2506			1
							10,047.26	Total				
							12,408.53	PROGRAM 528 - C25-0196 LONG PRAIRIE COLLABTV FY25 WBIF Total				
PROGRAM 538 - C25-0118 RED EYE WATERSHED IMPLEM GRANT												
79-603-538-0000-5801 - REVENUE-C25-0118 RED EYE WTRSD IMP C												
RE	RE	Todd County Soil and Water	05/2026	151059	05/28/2026	222	426.53-	Misc-Reimbursement-Staff Wages	East OtterTail			1
							426.53-	Total	SWCD			
79-603-538-0000-6810 - PRJ DEV EXP-C25-0118 RED EYE WTR IMP C												
DI	DI	12016-LONG PRAIRIE LEADER	05/2026	246479	05/26/2026	333	1,419.00	SWCD Newsletter/Annual Report	20122			1
							1,419.00	Total				



Tran	G/L	Receipt/Warrant	Invoice	Accr								
SC	Type	Vendor	Mont	NUMBER	DATE	Seq	AMOUNT	Description / Service Dates	Number	Cd	Basis	R1R2
		79-603-538-0000-6849 - TECH ASSIST.EXP-C25-0118 RED EYE WTR										
DI	DI	11167-WEST CENTRAL TECH SERVICE AREA	05/2026	246403	05/11/2026	333	1,309.90	Tech Assist WCTSA	26-25			1
		79-603-538-0000-6849 - TECH ASSIST.EXP-C25-0118 RED EYE				Total	1,309.90					
		PROGRAM 538 - C25-0118 RED EYE WATERSHED IMPLEM GRANT				Total	2,302.37					
		PROGRAM 540 - FY24 GET OUT MORE HEWITT DAM REMOVAL										
		79-603-540-0000-6849 - TECHNICAL ASSIST.EXP-FY24 GET OUT MOF										
DI	DI	11167-WEST CENTRAL TECH SERVICE AREA	05/2026	246403	05/11/2026	333	269.73	Tech Assist WCTSA	26-25			1
		79-603-540-0000-6849 - TECHNICAL ASSIST.EXP-FY24 GET OUT				Total	269.73					
		PROGRAM 540 - FY24 GET OUT MORE HEWITT DAM REMOVAL				Total	269.73					
		PROGRAM 551 - FEEDLOT										
		79-603-551-0000-6845 - PROGRAM EXPENSE (FEEDLOT)										
DI	DI	12016-LONG PRAIRIE LEADER	05/2026	246479	05/26/2026	333	473.00	SWCD Newsletter/Annual Report	20122			1
		79-603-551-0000-6845 - PROGRAM EXPENSE (FEEDLOT)				Total	473.00					
		PROGRAM 551 - FEEDLOT				Total	473.00					
		PROGRAM 583 - COUNTY RIPARIAN AID										
		79-603-583-0000-6845 - PROJ/PROG EXP-COUNTY RIPARIAN AID										
DI	DI	10211-LITTLE BIRCH LAKE IMPROVEMENT ASSOC.	05/2026	246348	05/04/2026	333	115.51	Reimb:PartnerMtg 04/25/26	2026			1
DI	DI	9697-JOHN DEERE FINANCIAL	05/2026	246476	05/26/2026	333	44.95	FencePostx5ShorelandEarthSigns	G25855			1
		79-603-583-0000-6845 - PROJ/PROG EXP-COUNTY RIPARIAN AID				Total	160.46					
		PROGRAM 583 - COUNTY RIPARIAN AID				Total	160.46					
		PROGRAM 586 - AIS PROGRAM										
		79-603-586-0000-6845 - PROGRAM/PROJECT EXP-AIS PROGRAM										
DI	DI	15334-BIG SAUK LAKE ASSOCIATION	05/2026	246368	05/11/2026	333	1,356.75	Cost Share Payment Request	Big Sauk			1
DI	DI	3245-KEYL KXDL HOTROD RADIO	05/2026	246381	05/11/2026	333	2,000.00	Radio Ads for AIS Program	878841			1
DI	DI	14098-BIG SWAN LAKE IMPROVEMENT ASSOCIATION	05/2026	246412	05/18/2026	333	2,610.00	Approved Amt for CLP Treatment	2026			1
DI	DI	12016-LONG PRAIRIE LEADER	05/2026	246479	05/26/2026	333	236.50	SWCD Newsletter/Annual Report	20122			1
		79-603-586-0000-6845 - PROGRAM/PROJECT EXP-AIS PROGRAM				Total	6,203.25					
		PROGRAM 586 - AIS PROGRAM				Total	6,203.25					



Rieffer Exclusion Fencing and Crossing

Location Information		Project Information	
Parcel Number	06-0019601	Project Type	Engineered
Township Name	Burnhamville	Practice Types	Access Control
TWP, Range, Section	128, 32, 14	Project Codes	472, 382, 578
Major Watershed	Mississippi-Brainerd	Field Technicians	Jessica Moore; Kasen Christiansen
Minor Watershed	Molly Cr - 10061	Engineer:	Ross Reiffenberger, P.E. WCTSA
Project Coordinates:			
45.890334	-94.67456		

POA Targeted Initiative: Water Quality, Safety & Protection

Resource Concern and Project Purpose Description

Joel and Gail Rieffer own approximately 36.17 acres along State Highway 28 and is 0.40 miles from Moose Lake. This project proposes protection of freshwater emergent wetlands with connectivity via intermittent stream to Molly Creek. Molly Creek is connected to mainstem of Swan River. This project also protects water from turbidity and nutrient loading. Currently the cattle have complete access to wetland area and project would exclude cattle from grazing in wetland. Includes 1,700 linear feet of 4 strand barbed wire fencing material with well pipe with gates for crossing area.

Alternative Conservation or Management Practice(s) Considered

Alternative solutions were weighed regarding cost analysis, practicality of install, material availability, longevity, maintenance requirements, and effective resolution of cause.

Funding Information:

Contractor	High-Mid-Low Estimate:	% C/S	Encumber Amount
Engineering Estimate	\$32,021.20	75%	\$38,621.20
Landowner In-kind	\$6,600.00		

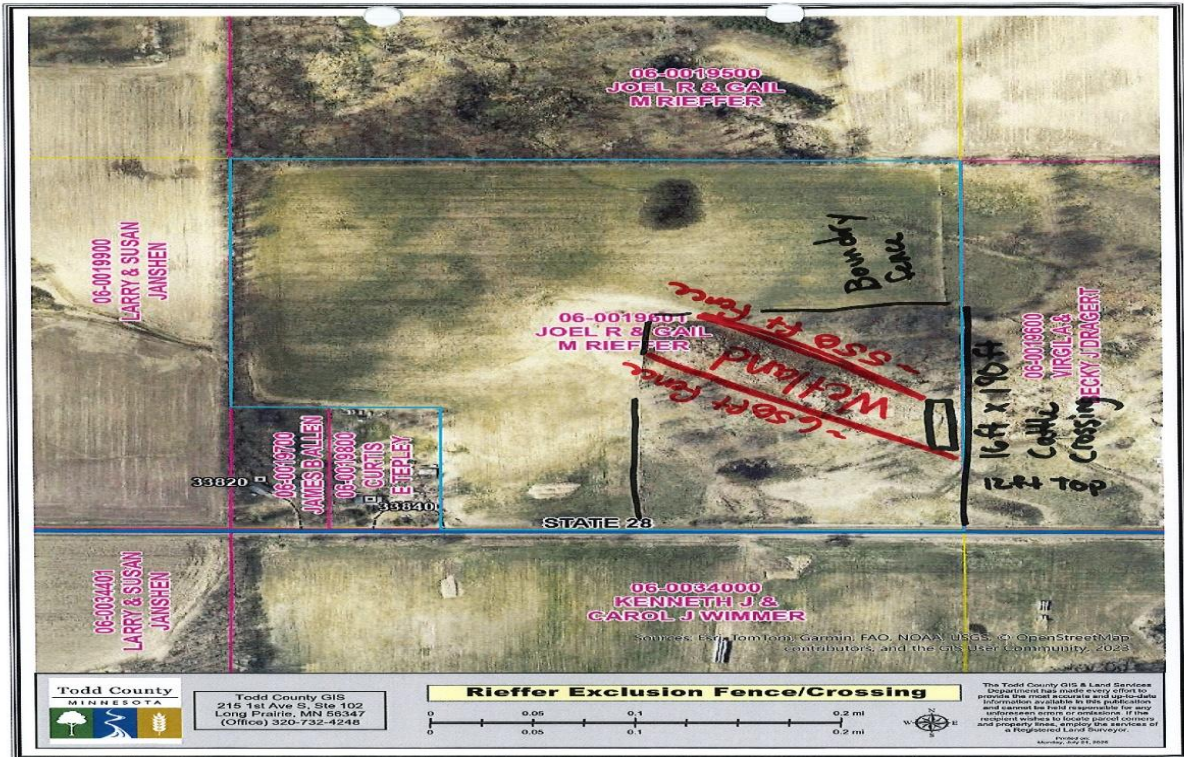
Final Invoice (s) TBD **Cost Share Payment Amount** \$28,965.90

Funding Source C24-0198 Mississippi TBD
 Brainerd WBIF
 Landowner Amount TBD

	Reduction	Reduction Notes
Nitrogen	17.85 lbs/yr	MPCA BEET /TODD Tool for <i>E.coli</i>
Fecal Coliform	1.3 E + 7 cfu	Livestock access control
Sediment/TSS	0.09345 tons/yr	
Phosphorus	3.1 lbs/yr	

Todd SWCD Mission Statement: Conservation, Protection, and Enhancement of Todd County's Natural Resources

Rieffer Exclusion and Fence, Encumbering, Submitted by, Jessica Moore/Kasen, Board Meeting Date: 2026.11.06



Todd SWCD Mission Statement: Conservation, Protection, and Enhancement of Todd County's Natural Resources

Rieffer Exclusion and Fence, Encumbering, Submitted by, Jessica Moore/Kasen, Board Meeting Date: 2026.11.06

Beste Forest Stewardship Plan - Encumbering

Location Information		Project Information	
Parcel Number(s)	15-00096000 15-0011200	Project Type	Ecological
Township Name	Leslie	Practice Types	Forest Mgmt
TWP, Range, Section	129N, 35W, 9/10	Project Codes	106
Major Watershed	Long Prairie	Field Technicians	Christiansen
Minor Watershed	Long Prairie River -14042	Forester	Itasca Woodland Services
Project Coordinates:	-95.084, 46.003		

POA Targeted Initiative: Water Quality, Safety & Protection

Resource Concern and Project Purpose Description

Jamie and Joshua Beste own approximately 160 acres located in a Tier 3 priority area of the Long Prairie watershed within Leslie Township, Sections 9/10. The property is within 0.7 miles of the Long Prairie River and an Unnamed DNR Public Water – 77019700. The landowner is seeking assistance for the creation of a forest stewardship plan. Itasca Woodland Services will be completing the plan.

Alternative Conservation or Management Practice(s) Considered

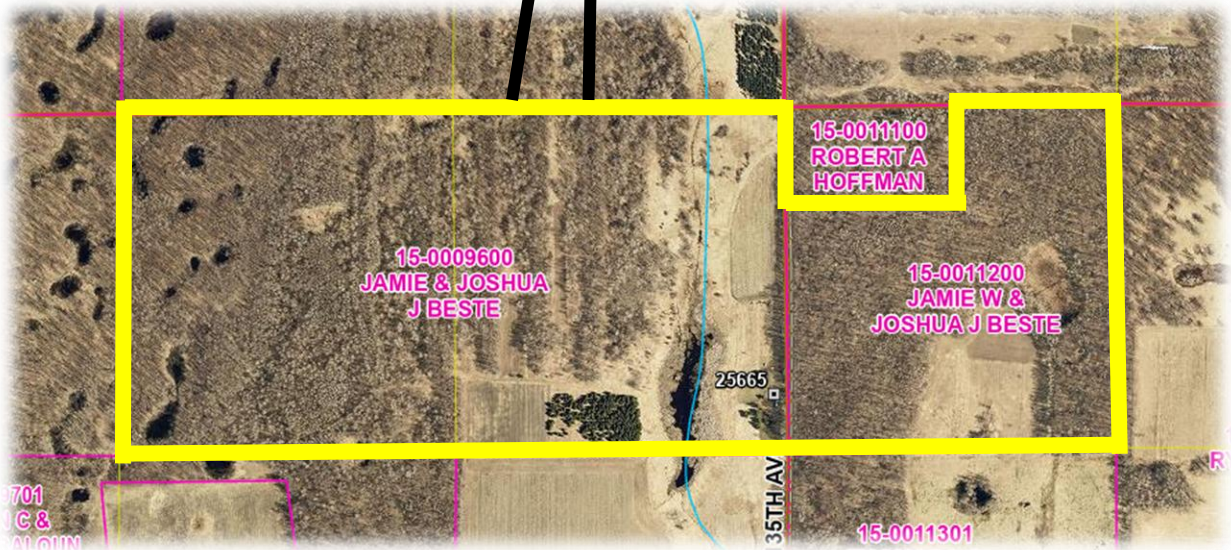
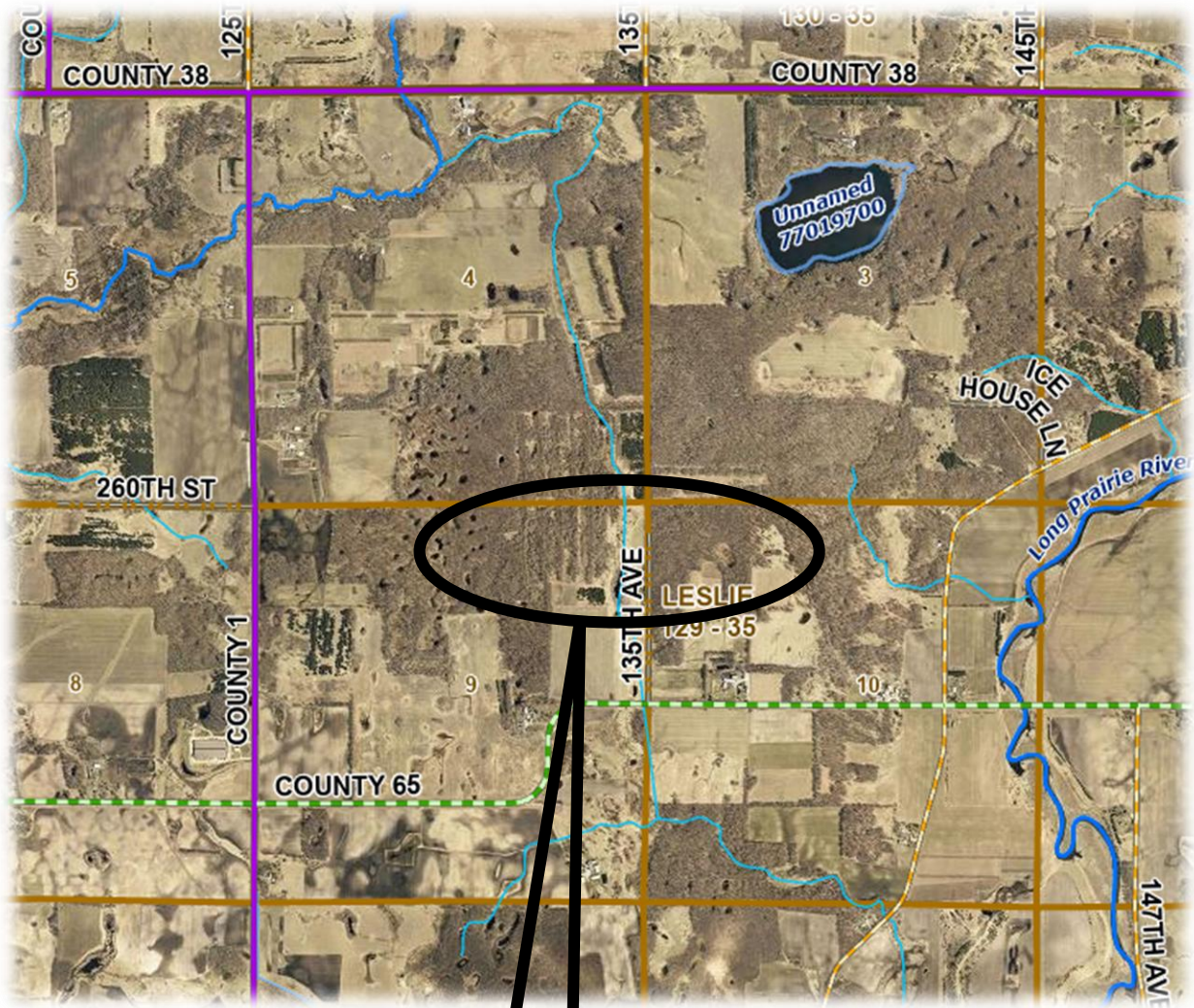
Alternative solutions were weighed regarding cost analysis, practicality of install, material availability, longevity, maintenance requirements, and effective resolution of cause.

Funding Information:

Contractor	Low Estimate:	% C/S	Encumber Amount
Itasca Woodland Services	\$2,700	44%	\$1,200 Max
Final Invoice (s)	TBD	Cost Share Payment Amount	TBD
Funding Source	FY23 LCCMR	TBD	
	Landowner Amount	TBD	

** The max amount of cost-share allowable through policy is \$1,200. **

	After	Reduction Notes
Nitrogen	18.3 (lbs/yr)	Reductions were calculated using the
Sediment/TSS	0.42 (tons/yr)	FERN Reduction Tool
Phosphorus	1.23 (lbs/yr)	



Todd SWCD Mission Statement: Conservation, Protection, and Enhancement of Todd County's Natural Resources

Beste FSP, Encumbering, Submitted by Kasen Christiansen, Board Meeting Date: 6/11/2026



Rice Lake Properties FSPs

Location Information

Parcel Number 24-0019;00198;00203(EAST); 24-00196 (LONE); 24-00293;00292; 00292; 0029401; 00298; 00294 (SE)

Township Name Turtle Creek

TWP, Range, Section 131-32- Sections 21 &28

Major Watershed Long Prairie

Minor Watershed 14038 Turtle Creek

Project Information

Project Type Ecological

Practice Types FSP

Project Codes 106

Field Technicians Anton

Forester: Stan Grossman-Itasca Woodland Services

Project Coordinates:

46.142008	-94.71292
46.131213	-94.718186
46.141978	-94.728509

POA Targeted Initiative: Land Productivity through Soil Health Conservation

Resource Concern and Project Purpose Description

Protection of Rice Lake and surrounding wetland complexes in a priority area of the Long Prairie Watershed through 430 acres combined of forest management.

Alternative Conservation or Management Practice(s) Considered

Alternative solutions were weighed regarding cost analysis, practicality of install, material availability, longevity, maintenance requirements, and effective resolution of cause. Failure to support management of forests in high development areas such as this area north of Pine Island Lake could result in development or further destruction of natural resources. Intact acres used for hunting and natural resource protection are the second-best alternative to conservation easements.

Funding Information:

East -**\$1,884.00**
 Lone- **\$ 471.00**
 S.E.- **\$ 4,380.40**

Collective Estimate:	% C/S	Encumber Amount
\$6,735	41%	East- \$1200 MAX; Lone:\$353.25; SE-\$1200 MAX

Final Invoice (s)	TBD	Costshare Payment Amount	\$2,753.25
Funding Source	FY23 LCCMR	TBD	

Todd SWCD Mission Statement: Conservation, Protection, and Enhancement of Todd County's Natural Resources

Rice Lake Properties- FSP Request, submitted by Deja Anton June 11, 2026



Goodwin Field Erosion

Location Information

Parcel Number 05-0012900
 Township Name Burleene
 TWP, Range, Section 130/35/18
 Major Watershed Long Prairie
 Minor Watershed 14015-Eagle Cr

Project Information

Project Type Engineered
 Practice Types WASCOB
 Project Codes 638
 Field Technicians Pratt/ Anton
 Engineering Assistance Ross
 Reiffenberger,
 P.E.- WCTSA

POA Targeted Initiative: **Hard Surfaces, More Water: Protect Surface Waters through Cost-share Practices**

Resource Concern and Project Purpose Description

Installation of 5 WASCOBs to reduce gully erosion and reduce field runoff to a road ditch that connects to Type 3 wetland with an intermittent stream to Eagle Creek.

Alternative Conservation or Management Practice(s) Considered

Alternative solutions were weighed regarding cost analysis, practicality of install, material availability, longevity, maintenance requirements, and effective resolution of cause. Options include not addressing field erosion and continuing to “band aid” the field each year after sediment loss with further expense to the county for ditch clean- out and repeated deposition into surface water, A second option was a grassed waterway but slopes do not allow this to be considered a successful practice to properly address this magnitude of erosion.

Latitude 46°04'28.7"N

Longitude -95°08'32.2"W

Funding Information

High Bid & Contractor Name	Low Bid & Contractor Name	Cost Share %
\$274,100.84	\$116,739.50	75% =
Ferguson Brothers Excavating	Mark Boesl Excavating	\$87,554..62

Amendment request for increase in cost-share: \$7,186.32

Final Invoice (s)	\$126,321.25	Cost Share Payment Amount	\$94,740.94
Funding Source	C23-3483 Long Prairie WBIF \$87,554.62		

Reductions

Nitrogen 96.72 lbs/yr
 Sediment/TSS .7686 tons/yr
 Phosphorus 16.76 lbs/yr

Reduction Notes

MPCA Watershed Pollutant Load Reduction Calculator used. Acres treated by new BMPs equals 50.

Todd SWCD Mission Statement: Conservation, Protection, and Enhancement of Todd County’s Natural Resources

Goodwin Field Erosion payout submitted by: [Deja Anton 2026.06.11](#)



Todd SWCD Mission Statement: Conservation, Protection, and Enhancement of Todd County's Natural Resources

Goodwin Field Erosion payout submitted by: Deja Anton 2026.06.11



Todd SWCD Mission Statement: Conservation, Protection, and Enhancement of Todd County's Natural Resources

Goodwin Field Erosion payout submitted by: Deja Anton 2026.06.11



Todd SWCD Mission Statement: Conservation, Protection, and Enhancement of Todd County's Natural Resources

Goodwin Field Erosion payout submitted by: Deja Anton 2026.06.11



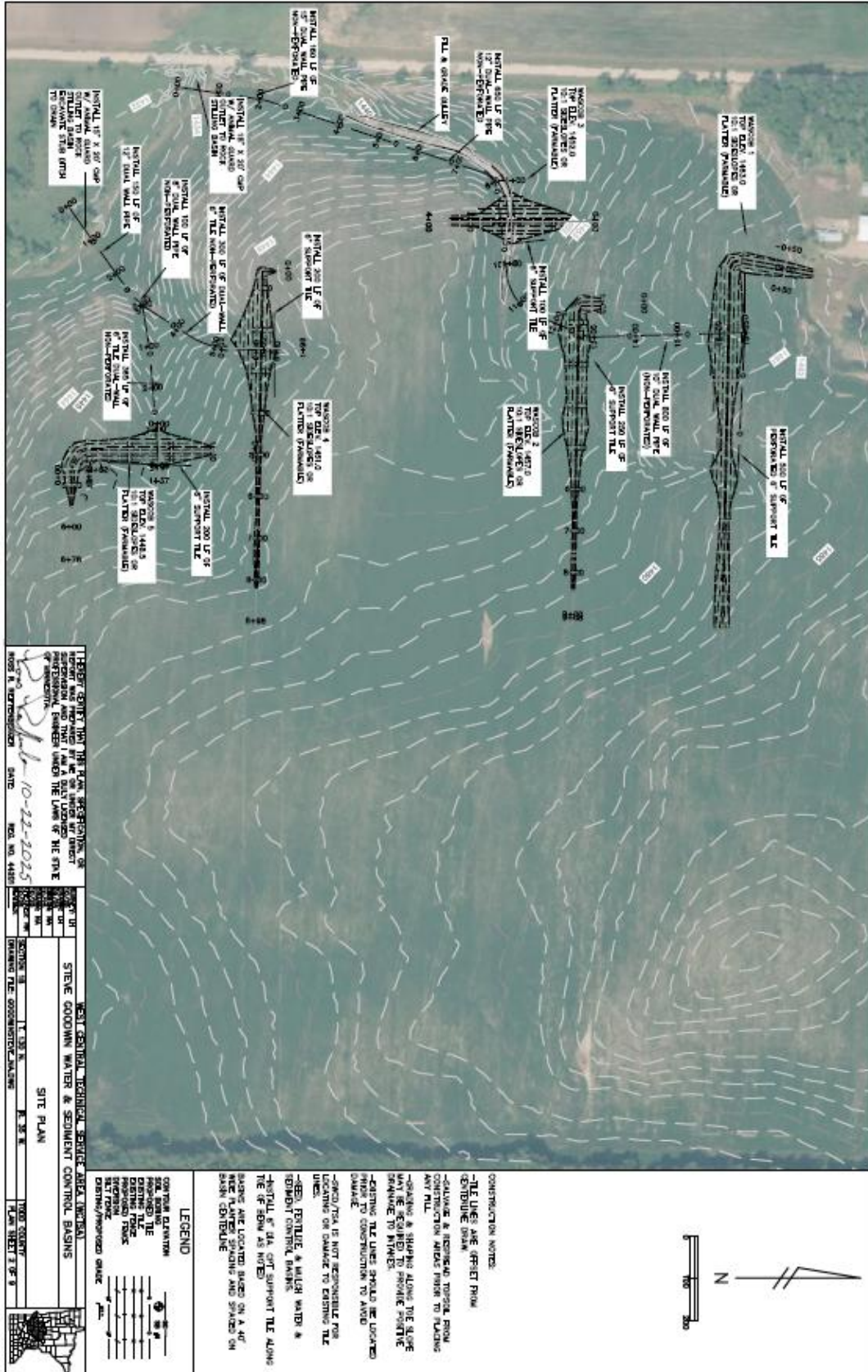
Todd SWCD Mission Statement: Conservation, Protection, and Enhancement of Todd County's Natural Resources

Goodwin Field Erosion payout submitted by: Deja Anton 2026.06.11



Todd SWCD Mission Statement: Conservation, Protection, and Enhancement of Todd County's Natural Resources

Goodwin Field Erosion payout submitted by: [Deja Anton](#) 2026.06.11



Todd SWCD Mission Statement: Conservation, Protection, and Enhancement of Todd County's Natural Resources

Goodwin Field Erosion payout submitted by: Deja Anton 2026.06.11



Muehlbauer Group Waterway & Diversion Amendment & Payout

Location Information

Parcel Number 11-0027600
 Township Name Grey Eagle
 TWP, Range, Section 127, 32, 20
 Major Watershed Sauk River
 Minor Watershed 16030 – From Big Birch Lake
 Project Coordinates: 45.797519, -94.735516

Project Information

Project Type Engineered
 Practice Types Diversion, Grassed Waterway
 Project Codes 362, 412
 Field Technicians Josh Votruba
 Engineer: Ross Reiffenberger

POA Targeted Initiative:

Water Quality, Safety & Protection

Resource Concern and Project Purpose Description

Large amounts of stormwater runoff draining from upland properties to Big Birch Lake has caused erosion and flooding on Muehlbauer property and neighbors to the north and south. This erosion has resulted in sediment and nutrients entering Big Birch Lake. This proposed project will stabilize areas where flooding or concentrated stormwater flow has caused erosion, this will result in less sediment and nutrients flowing downstream to Big Birch Lake.

Alternative Conservation or Management Practice(s) Considered

Alternative solutions were weighed regarding cost analysis, practicality of install, material availability, longevity, maintenance requirements, and effective resolution of cause.



Funding Information:

Contractor	Low Estimate:	% C/S	Encumber Amount
Doug's Excavating	\$15,260.00	75%	\$11,445.00

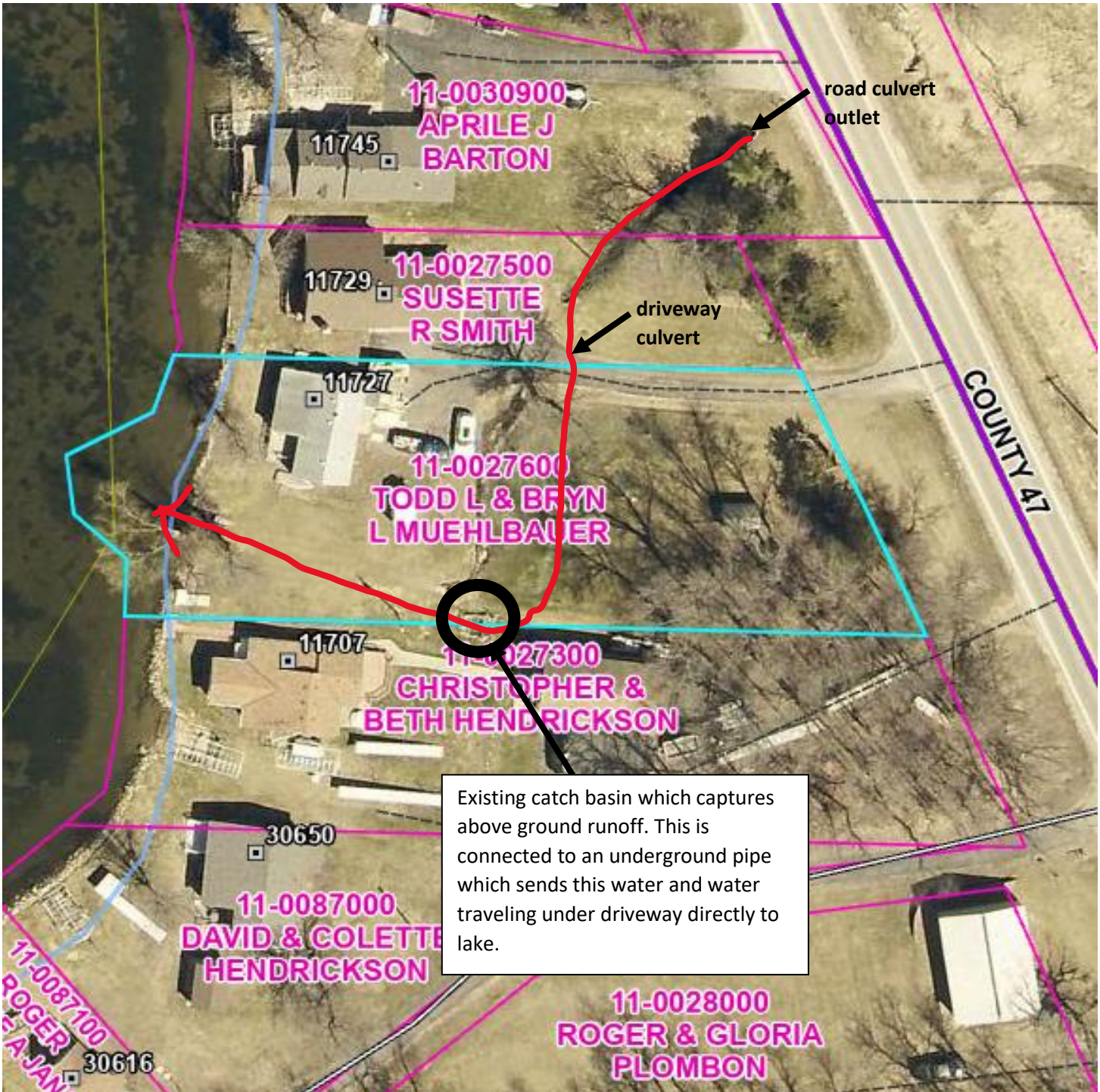
Final Invoice (s)	\$16,260.00	Cost Share Payment Amount	\$12,195.00 (Amount with Amendment)
--------------------------	-------------	----------------------------------	--

Funding Source	FY 2026 Riparian	\$12,195.00
	Landowner Amount	\$4,065.00

Amendment request for \$750.00 from FY 2026 Riparian to increase total cost-share request from \$11,445 to \$12,195 on June 11, 2026. Additional amounts of rock, sediment cleaning, and erosion control materials totaling \$1,000.00 were approved by Engineer Ross Reiffenberger for the stabilization of the culvert outlet, cleaning of accumulated sediment in ditch/drainage, and sediment/stormwater controls not included in final engineer plan. These additional items raised the total cost of project from \$15,260 to \$16,260.

Reduction Notes

Phosphorus	7.36 lbs/yr	BWSR Gully Stabilization Estimator
Sediment (TSS)	8.66 T/yr	
Soil	8.66 T/yr	



Red line above showing approximate movement of water on property from County Rd 47 culvert. Once water crosses driveway it travels by an underground pipe to Big Birch Lake.



Final engineering design plan above. A series of swales/waterways and diversions will stabilize areas receiving large amounts of concentrated stormwater flow coming from upland sources. An existing drainage system currently exists on property but cannot handle large rain events, thus leading to flooding and erosion. This project will complement the existing drainage system on property and stabilize areas receiving large amounts of stormwater.

Todd SWCD Mission Statement: Conservation, Protection, and Enhancement of Todd County's Natural Resources

Muehlbauer Waterway & Diversion, Amendment & Payout, Submitted by Josh Votruba, 2026.06.11



Before



After – Accumulated Sediment removed from ditch and side slopes stabilized with erosion blanket.



County Rd 47 Culvert Outlet - Before



County Rd 47 Culvert Outlet - After



Before



After



Constructed swale directing water to existing catch basin

Todd SWCD Mission Statement: Conservation, Protection, and Enhancement of Todd County's Natural Resources

Muehlbauer Waterway & Diversion, Amendment & Payout, Submitted by Josh Votruba, 2026.06.11



Constructed waterway which allows for a stable drainage area down to the lake when the catch basin gets overwhelmed during large rains events.



Outlet area of waterway

Renneberg FSP

Location Information

Parcel Number 07-0027901
 Township Name Eagle Valley
 TWP, Range, Section 131-34-24
 Major Watershed Long Prairie
 Minor Watershed 14047 Eagle Creek
 Project Coordinates:
 46.298117 -94.765962

Project Information

Project Type Ecological
 Practice Types FSP
 Project Codes 106
 Field Technicians Anton
 Forester: Erik Eggen

POA Targeted Initiative:

Water Quality, Safety & Protection

Resource Concern and Project Purpose Description

40 acre FSP bordering County Ditch 29, a tributary to Eagle Creek, an impaired creek. The forests on this 40 -ac parcel are critical for water storage and nutrient uptake and protection of ground and surface water. In the middle of this parcel is a wetland, the lowest spot in the area, receiving waters from hundreds of acres of conventionally tilled agricultural land. This hardwood forest is important in up taking nutrients, acts as a nutrient sponge for the watershed in that area. In an ideal world there would be this type of buffer along the entire ditch corridor.

Alternative Conservation or Management Practice(s) Considered

Alternative solutions were weighed regarding cost analysis, practicality of install, material availability, longevity, maintenance requirements, and effective resolution of cause.

Funding Information:

Contractor	Low Estimate:	% C/S	Encumber Amount
Timberlane Forestry	\$700	75%	\$525

Final Invoice (s)	700	Cost Share Payment Amount	525
-------------------	-----	---------------------------	-----

Funding Source	FY23 LCCMR- P23-2945	\$525
	Landowner Amount	\$175

Add notes if needed.

	After	Reduction Notes
Nitrogen	49.4 lbs	FERN
Sediment/TSS	.08 Tons	
Phosphorus	3.73 lbs	

Todd SWCD Mission Statement: Conservation, Protection, and Enhancement of Todd County's Natural Resources

Enter Project Name, Encumbering or Payment, submitted by, Board Meeting Date 2024.10.10.



Quote:

The negative side to clear cutting tree stands is the risk of “flooding out” the surrounding stands or acreage because the water table rises. Selectively harvesting the mature ash trees would prevent water table fluctuations.

Todd SWCD Mission Statement: Conservation, Protection, and Enhancement of Todd County’s Natural Resources

Enter Project Name, Encumbering or Payment, submitted by, Board Meeting Date 2024.10.10.



Katterhagen Tree Establishment Payout

Location Information

Parcel Number 26-0022400
 Township Name Ward
 TWP, Range, Section 131/33/24
 Major Watershed Long Prairie
 Project Coordinates:
 46.137854, -94.791612

Project Information

Project Type Ecological
 Practice Types Tree Establishment
 Project Codes 612
 Field Technicians Scheve/Christiansen

POA Targeted Initiative: Land Productivity through Soil Health Conservation

Resource Concern and Project Purpose Description

This plan included three rows consisting of white cedar, white spruce, Norway spruce and Black Hills Spruce totaling 630 feet of new tree establishment. With the new trees established, wind erosion and soil erosion will be reduced rather than no protection provided from the elements.

Trees were planted on 5/1/2026 with technician certification on 5/20/2026.

Alternative Conservation or Management Practice(s) Considered

Alternative solutions were weighed regarding cost analysis, practicality of install, material availability, longevity, maintenance requirements, and effective resolution of cause.

Funding Information:

Contractor	Low Estimate: \$938.29 + \$354.23 (Amendment) = \$1,292.52	% C/S 75%	Encumber Amount \$969.39
Final Invoice (s)	\$1207.71	Cost Share Payment Amount	\$905.78
Funding Source	FY26 Soil Health Delivery	\$905.78	
	Landowner Amount	\$301.93	

	Before	After	Reduction Notes
Nitrogen	3.4	.2	FERN Calculator indicated levels of load reductions once practice implemented.
Sediment/TSS	.01	0.0	
Phosphorus	.25	.01	

Todd SWCD Mission Statement: Conservation, Protection, and Enhancement of Todd County's Natural Resources

Katterhagen Tree Establishment, Payout, submitted by Christiansen/Scheve on 6/2/2026



Trees were successfully planted on 5/1/2026 with technician certification on 5/20/2026.



Todd SWCD Mission Statement: Conservation, Protection, and Enhancement of Todd County's Natural Resources

[*Katterhagen Tree Establishment, Payout, submitted by Christiansen/Scheve on 6/2/2026*](#)

Tree Establishment - Hanson- Payout

Location Information		Project Information	
Parcel Number	36-0120800	Project Type	Ecological
Township Name	Long Prairie, City	Practice Types	Tree Establishment
TWP, Range, Section	129, 33, 19	Project Codes	612
Major Watershed	Long Prairie	Field Technicians	Kasen & Alyssa
Minor Watershed	14059 Long Prairie Cr	Forester:	N/A
Project Coordinates:	45.972; -94.880,		

POA Targeted Initiative: Water Quality, Safety & Protection

Resource Concern and Project Purpose Description

Located at the edge of a Long Prairie subdivision, the Hanson project is an urban conservation effort designed to manage stormwater runoff and stabilize sandy soils. The property is situated on a slope that drains toward the city storm drains and FEMA floodplain of the Long Prairie River. Storm drains are located at the corner of 3rd Ave SW and 6th St SW.

The planting will be 7 rows (1,300 feet) consisting of Lilac, Juneberry, American Plum, Hazelnut, Nanking Cherry, Balsam Fir, and White Spruce. The deep roots will anchor the site’s sandy soils, preventing erosion toward the storm drains and river basin, while the foliage will provide food/habitat for wildlife. To ensure successful establishment in an area due to high deer pressure, the Juneberry, Plum, and Hazelnut trees will be protected by tree tubes.

Alternative Conservation or Management Practice(s) Considered

Alternative solutions were weighed regarding cost analysis, practicality of install, material availability, longevity, maintenance requirements, and effective resolution of cause.

Funding Information:

Contractor	Low Estimate:	% C/S	Encumber Amount
Landowner In-kind	\$970.08	75%	\$727.56
Final Invoice (s)	\$955.86	Cost Share Payment Amount	\$716.90
Funding Source	FY2026 Riparian	\$716.90	
	Landowner Amount	\$238.96	

	After	Reduction Notes
Nitrogen	0.03 (lbs/yr)	While the reduction figures are modest, the planting effectively mitigates sediment erosion and prevents runoff from entering the urban stormwater system.
Sediment/TSS	0.01 (tons/yr)	
Phosphorus	0.02 (tons/yr)	

Todd SWCD Mission Statement: Conservation, Protection, and Enhancement of Todd County’s Natural Resources

Hanson Tree Establishment, Payout, Submitted by Kasen & Alyssa, Board Meeting Date 6/11/26



Growing Community Connections in Natural Resource Resiliency & Land Use Protection



Todd SWCD Mission Statement: Conservation, Protection, and Enhancement of Todd County's Natural Resources

Hanson Tree Establishment, Payout, Submitted by Kasen & Alyssa, Board Meeting Date 6/11/26

Tree Establishment - Alstead- Payout

Location Information		Project Information	
Parcel Number	07-0024600	Project Type	Ecological
Township Name	Eagle Valley	Practice Types	Tree Establishment
TWP, Range, Section	131, 34, 21	Project Codes	612
Major Watershed	Long Prairie	Field Technicians	Kasen & Alyssa
Minor Watershed	14046 Eagle Creek	Forester:	N/A
Project Coordinates:	-94.960, 46.142		

POA Targeted Initiative: Water Quality, Safety & Protection

Resource Concern and Project Purpose Description

Located a half mile north of Clarissa, the Alstead project lies within a riparian drainage area to Eagle Creek with a history of impairment. The primary goal is to reduce transport of sediment, pathogens, chemicals, pesticides, and nutrients to surface water coming from conventional field practices both north and east of this buffer area. An acre of land would be used for trees planting to restore the diversity, structure, and composition of riparian plant communities while simultaneously benefiting water quality and wildlife.

The planting will be 11 rows (3,700 feet) consisting of Hazelnut, Ninebark, Gray Dogwood, Red Dogwood, and Red Maple. Trees will provide benefits for water quality, wind erosion, and wildlife. A minimum of 300 trees is required for a 1-acre planting. The landowner will be planting 530 trees in total. Landowner was one of the first to use the tree planter.

Alternative Conservation or Management Practice(s) Considered

Alternative solutions were weighed regarding cost analysis, practicality of install, material availability, longevity, maintenance requirements, and effective resolution of cause.

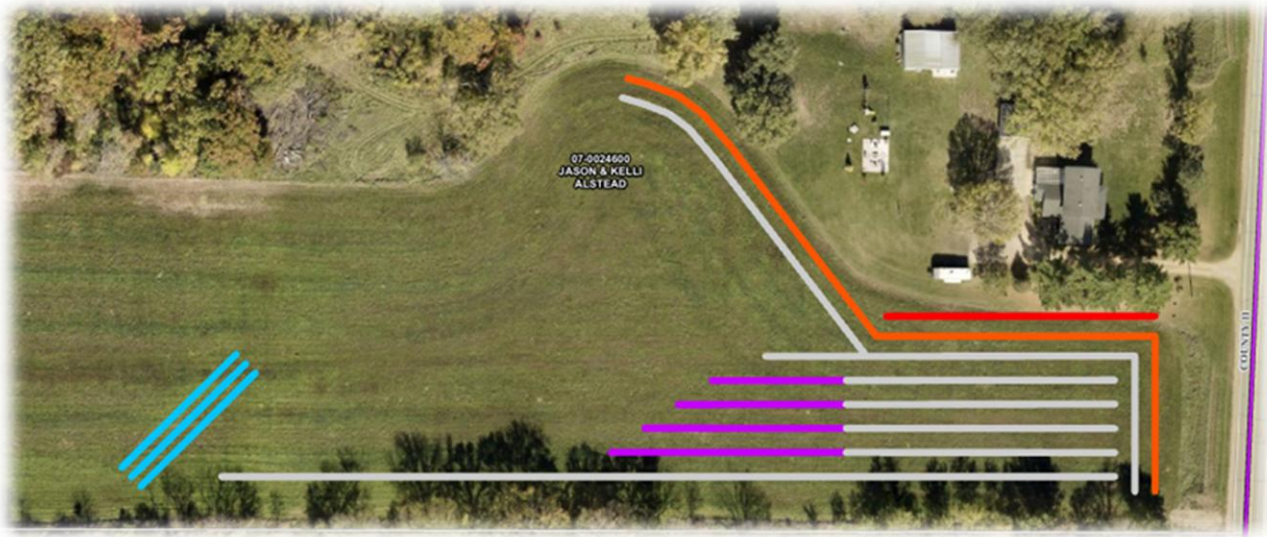
Funding Information:

Contractor	Low Estimate:	% C/S	Encumber Amount
Landowner In-kind	\$1884.56	75%	\$1413.42
Final Invoice (s)	\$1944.76	Cost Share Payment	\$1413.42
		Amount	73%
Funding Source	FY2026 Riparian	\$1413.42	
	Landowner Amount	\$531.34	

	After	Reduction Notes-BEET
Nitrogen	30.3(lbs/yr)	The planting effectively mitigates sediment erosion and prevents runoff from entering the Eagle Creek from overland flow north and NE of the site.
Sediment/TSS	.3 (tons/yr)	
Phosphorus	4.1(lbs/yr)	

Todd SWCD Mission Statement: Conservation, Protection, and Enhancement of Todd County's Natural Resources

Alstead Tree Establishment, Payout, Submitted by Kasen & Alyssa, Board Meeting Date 6/11/26



Todd SWCD Mission Statement: Conservation, Protection, and Enhancement of Todd County's Natural Resources
Alstead Tree Establishment, Payout, Submitted by Kasen & Alyssa, Board Meeting Date 6/11/26



Ager Forest Stewardship Plan - Payout

Location Information

Parcel Number(s) 04-0031000, 04-0032200
 04-0032000, 04-0031605
 Township Name Bruce
 TWP, Range, Section 129N, 32W, 31
 Major Watershed Mississippi-Brainerd
 Minor Watershed Swan River – 10131
 Project Coordinates: -94.763, 45.938

Project Information

Project Type Ecological
 Practice Types Forest Mgmt
 Project Codes 106
 Field Technicians Christiansen
 Forester Jaden Bjorklund

POA Targeted Initiative:

Water Quality, Safety & Protection

Resource Concern and Project Purpose Description

Jerry and Cynthia Ager have approximately 138 acres located in a Tier 1 priority area of the Mississippi-Brainerd watershed within Bruce Township, Section 31. The acres border an open water wetland and connect to a DNR Public Water - Intermittent Stream through culverts under County 39 and 210th Street. 121 acres are considered eligible stewardship acres. The plan was completed by Northland Habitat LLC and was approved by DNR April 18th, 2026.

Alternative Conservation or Management Practice(s) Considered

Alternative solutions were weighed regarding cost analysis, practicality of install, material availability, longevity, maintenance requirements, and effective resolution of cause.

Funding Information:

Contractor	Low Estimate:	% C/S	Encumber Amount
Northland Habitat LLC	\$1,510.00	75%	\$1,132.50
Final Invoice (s)	\$1,510.00	Cost Share Payment	\$1,132.50
		Amount	
Funding Source	C24 Miss.-Brainerd WBIF	\$1,132.50	
	Landowner Amount	\$377.50	

** The max amount of cost-share allowable through policy is \$1,200. **

	After	Reduction Notes
Nitrogen	8.9 (lbs/yr)	Reductions were calculated using the
Sediment/TSS	1.26 (tons/yr)	FERN Reduction Tool
Phosphorus	0.63 (lbs/yr)	

Todd SWCD Mission Statement: Conservation, Protection, and Enhancement of Todd County's Natural Resources

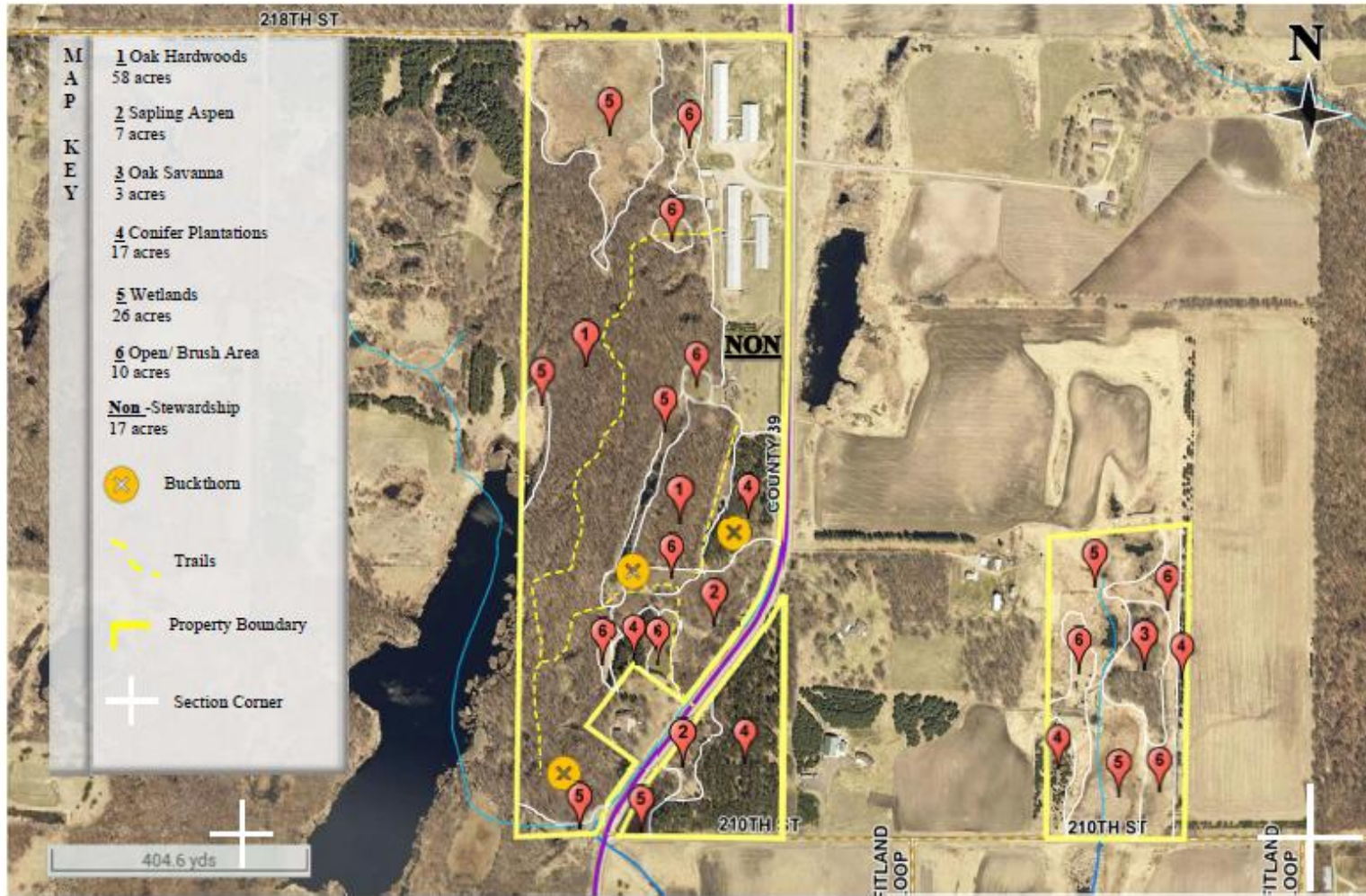
Ager FSP, Payout, Submitted by Kasen Christiansen, Board Meeting Date: 6/11/2026

2026 Plan of Action:

Growing Community Connections in Natural Resource Resiliency & Land Use Protection

MAP OF STEWARDSHIP PARCEL

Name: Jerry Ager	Address: 21629 County 39 Long Prairie, MN 56347	Phone Number: 320-232-3817
Subsection: SE ¼ NE ¼, NE ¼ SW ¼, SE ¼ SW ¼, PT E ½ SE ¼ Section 31	Township: 129N	Range: 32W
Parcel ID #: 04-0031000, 04-0032200, 04-0032000, 04-0031605	County: Todd	



Ager FSP, Payout, Submitted by Kasen Christiansen, Board Meeting Date: 6/11/2026



Pipek Forest Stewardship Plan - Payout

Location Information		Project Information	
Parcel Number(s)	25-001700, 25-0017400 25-0017500	Project Type	Ecological
Township Name	Villard	Practice Types	Forest Mgmt
TWP, Range, Section	133N, 32W, 17/18	Project Codes	106
Major Watershed	Crow Wing	Field Technicians	Christiansen
Minor Watershed	Hayden Creek - 12045	Forester	Bob Perleberg
Project Coordinates:	-94.764, 46.338		

POA Targeted Initiative: Water Quality, Safety & Protection

Resource Concern and Project Purpose Description

Daniel Pipek owns approximately 168 acres located in a Tier 2 priority area of the Crow Wing watershed within Villard Township, Sections 17/18. The acres boarder Hayden Lake, DNR Public Water – 77008000. 110 acres are considered eligible stewardship acres.

Alternative Conservation or Management Practice(s) Considered

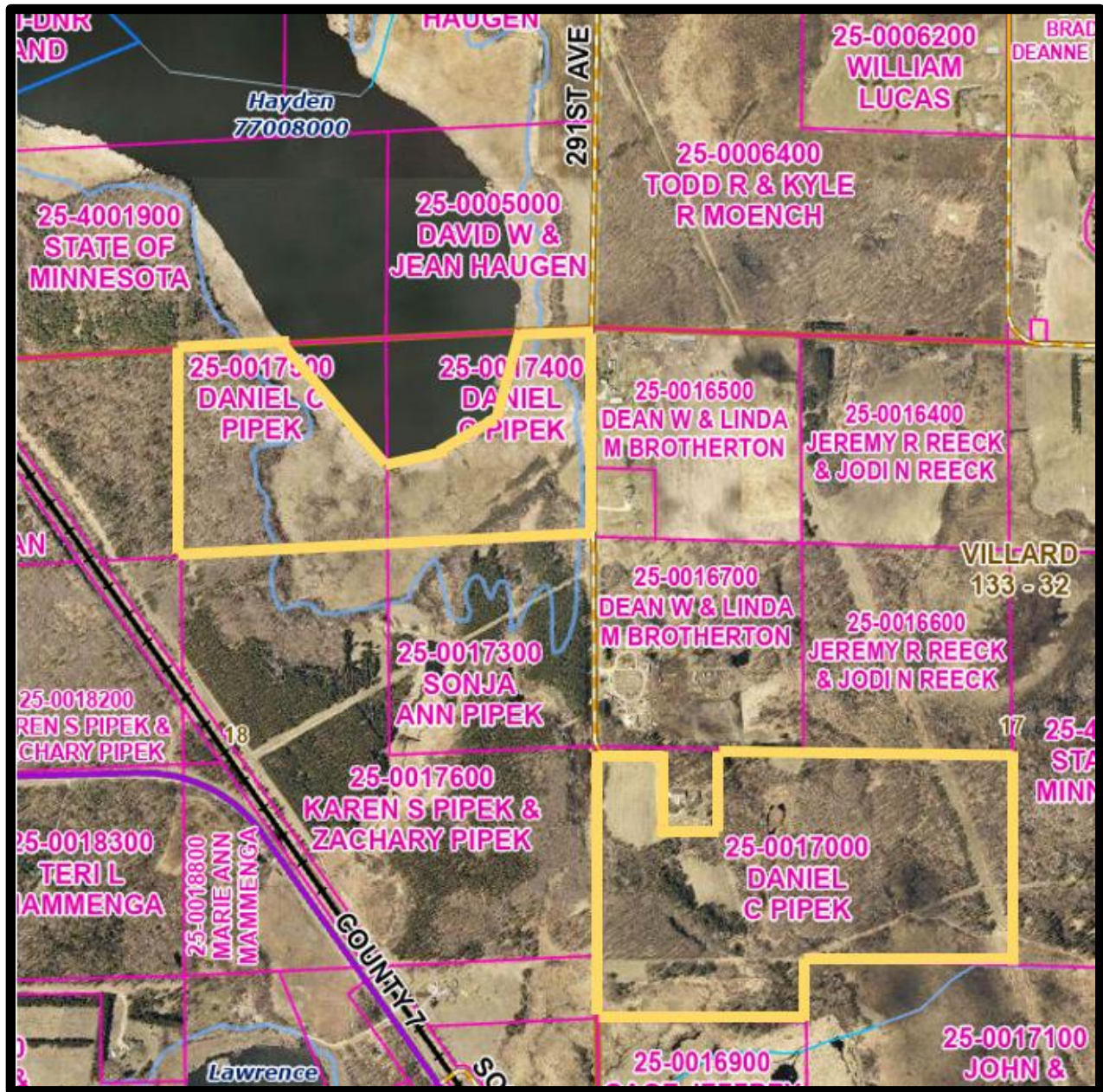
Alternative solutions were weighed regarding cost analysis, practicality of install, material availability, longevity, maintenance requirements, and effective resolution of cause.

Funding Information:

Contractor	Low Estimate:	% C/S	Encumber Amount
Forestry First LLC	\$1,400.00	75%	\$1,050.00
Final Invoice (s)	\$1,400	Cost Share Payment	\$1,050.00
		Amount	
Funding Source	Crow Wing WBIF	\$1,050.00	
	Landowner Amount	\$350.00	

** The max amount of cost-share allowable through policy is \$1,200. **

	After	Reduction Notes
Nitrogen	5.3 (lbs/yr)	Reductions were calculated using the
Sediment/TSS	0.12 (tons/yr)	FERN Reduction Tool
Phosphorus	0.35 (lbs/yr)	



Todd SWCD Mission Statement: Conservation, Protection, and Enhancement of Todd County's Natural Resources

Pipek FSP, Payout, Submitted by Kasen Christiansen, Board Meeting Date: 6/11/2026



Bebejo Ranch LLC Forest Stewardship Plan Payout

Location Information

Parcel Number 06-0114600 & 06-006500
 Township Name Burnhamville
 TWP, Range, Section 130, 35, 10
 Major Watershed Mississippi-Brainerd
 Minor Watershed 10132 – Swan R
 Project Coordinates: 45.921514, -94.721018

Project Information

Project Type Ecological
 Practice Types Forest Stewardship Plan
 Project Codes 106
 Field Technicians Christiansen
 Forester: Bob Perleberg (Forestry First LLC)

POA Targeted Initiative: **Water Quality, Safety & Protection**

Resource Concern and Project Purpose Description

206 acres (2 parcels), located adjacent to Mons Lake are eligible for stewardship acres. Wetlands and an intermittent stream on property have direct connectivity to Mons Lake. By remaining forested, the parcel acts as a water quality buffer for Mons Lake. The landowner has a previous FSP expiring in July 2026 and is seeking the creation of a new plan to continue forest management practices. 203 acres are eligible for the FSP.

Alternative Conservation or Management Practice(s) Considered

Alternative solutions were weighed regarding cost analysis, practicality of install, material availability, longevity, maintenance requirements, and effective resolution of cause.

Funding Information:

Contractor	Low Estimate:	% C/S	Encumber Amount
Bob Perleberg (Forestry First LLC)	\$2,320	51.7%	\$1,200 (max)
Final Invoice (s)	\$2,320	Cost Share Payment Amount	\$1,200 (max)
Funding Source	C24 Miss.-Brainerd	WBIF	\$1,200 (max)
	Landowner Amount		\$1,120

Add notes if needed.

	After	Reduction Notes
COD	NA	Forestry Estimator for Runoff and
Nitrogen	11.6 lbs/yr	Nutrients (FERN)
Sediment/TSS	1.64 tons/yr	
Phosphorus	0.82 lbs/yr	

Todd SWCD Mission Statement: Conservation, Protection, and Enhancement of Todd County's Natural Resources

Bebejo Ranch LLC Forest Stewardship Plan, Payout, submitted by Kasen Christiansen, 6/11/2026



Todd County Parcel Description: PID #'s 06-0114600 and 06-0006500

The SW1/4, the SW1/4 of the SE1/4, and Lot 3 of Block 1 of Waters Edge at Mons Lake, Second Addition, all in Section 4, Township 128 N., Range 32 W. (Burnhamville Township)

	Acres		
	Stewardship Plan	Estimated 2C MFL*	Estimated SFIA**
Total ownership	206	206	206
Building site (deduction)	-3	-10	-3
Total eligible acres	203	196	203

Todd SWCD Mission Statement: Conservation, Protection, and Enhancement of Todd County's Natural Resources

Bebejo Ranch LLC Forest Stewardship Plan, Payout, submitted by Kasen Christiansen, 6/11/2026

Grade Stabilization – Padua Prairie Partnership - Payout

Location Information		Project Information	
Parcel Number	14-0027200	Project Type	Ecological/Engineered
	14-0027602		ed
Township Name	Kandota	Practice Types	Grade Stabilization/WASCOB
TWP, Range, Section	28/127/34	Project Codes	410, 638
Major Watershed	Sauk River	Field Technicians	Christiansen
Minor Watershed	Ashley Creek - 16035	Engineering:	Ross Reiffenberger
Project Coordinates:	45.784245, -94.973008		WCTSA

POA Targeted Initiative: Water Quality, Safety & Protection

Resource Concern and Project Purpose Description

Padua Prairie Partnership land is 160 acres adjacent to Ashley Creek located within Kandota Township, 0.3 miles south of Fairy Lake (77015400). Ashley Creek is an impaired water and located within a priority area of the Sauk River Watershed- Reach 150. Overtime, a large gully has formed (approximately 3,600 linear feet) causing field erosion and crop loss, causing sediment discharge into Ashley Creek and surrounding wetlands. This project is considered a “phase two” of the Fairy Lake – Outlet Restoration Project. WCTSA Engineer has designed a grade stabilization plan to create 5 WASCOBs and install subsurface drain tile within entirety of the gully slowing the movement of water and limiting sediment discharge into Ashley Creek. **Amended amount \$154,638.00**

Alternative Conservation or Management Practice(s) Considered

Alternative solutions were weighed regarding cost analysis, practicality of install, material availability, longevity, maintenance requirements, and effective resolution of cause.

Funding Information:

Contractor	Estimate:	% C/S	Encumber Amount
MBC Drainage	\$146,663.00	75%	\$109,997.25
	West Central WCTSA		
	Cost-Estimate		
	Amended \$154,638.00		\$115,978.50
Final Invoice (s)	\$152,538.00	Cost Share Amount	\$114,403.50
Potential Funding Source(s)	Sauk WBIF-C22-4860	\$114,403.50	
	Landowner	\$38,134.50	
Sediment/TSS	3.7 Tons/ac/yr	Reductions from MPCA BEET:	
Phosphorus	35.1 lbs/ac/yr		
Nitrogen	570.3 lbs/ac/yr		

Todd SWCD Mission Statement: Conservation, Protection, and Enhancement of Todd County’s Natural Resources

Padua Prairie Grade Stabilization, Payout, Submitted by Kasen Christiansen, 6/11/2026



After



Inlet



WASCOB 3



Before



Todd SWCD Mission Statement: Conservation, Protection, and Enhancement of Todd County's Natural Resources

Padua Prairie Grade Stabilization, Payout, Submitted by Kasen Christiansen, 6/11/2026

Sauk River Watershed Collaborative Amendment to Fiscal Agent Agreement

THIS AMENDMENT is made by and between the Sauk River Watershed Collaborative Members (also referred to herein as the “SRWC”), the County of Stearns, and the Stearns County Soil and Water Conservation District.

WHEREAS, in the year 2021 both the Sauk River One Watershed, One Plan (“1W1P”) in accordance with Minnesota Statute §103B.101 and the Sauk River Watershed Collaborative Agreement to implement the Comprehensive Watershed Management Plan (CWMP) were adopted; and

WHEREAS, the SRWC appointed the County of Stearns as the Fiscal Agent for the SRWC and entered into the Sauk River Collaborative Fiscal Agent Agreement under which the County of Stearns administers the Board of Soil and Water Resources (BWSR) Watershed-Based Implementation Funding Grants and other funding and grants received by Stearns County on behalf of the SRWC; and

WHEREAS, the County of Stearns wishes to withdraw as Fiscal Agent for the SRWC; and

WHEREAS, the Stearns County Soil and Water Conservation District (SWCD) wishes to assume the duties of Fiscal Agent for the SRWC and is willing to assume obligations of current Grant Agreements and enter into future Grant Agreements on behalf of the SRWC beginning July 31, 2026; and

WHEREAS, the Sauk River Watershed Collaborative Agreement provides for withdrawal of the fiscal agent and appointment of a new fiscal agent; and

NOW, THEREFORE, in consideration of the terms and conditions expressed in the Sauk River Watershed Collaborative Agreement and this Agreement, the County of Stearns, the Stearns County Soil and Water Conservation District, and the SRWC agree as follows:

1. That Stearns County shall remain the Fiscal Agent for the SRWC through July 30, 2026 and shall administer the funds from the Grant Agreement entered into by the County of Stearns on behalf of the SRWC through July 30, 2026.
2. That upon the withdrawal of the County of Stearns as Fiscal Agent for the SRWC, which is anticipated to occur July 30, 2026, the Stearns County Soil and Water Conservation District is appointed the Fiscal Agent on behalf of the SRWC.
3. That “the Stearns County Soil and Water Conservation District” shall replace “the County of Stearns” and “Stearns County” as the Fiscal Agent in the Sauk River Watershed Collaborative Fiscal Agent Agreement; and the Stearns County Soil and Water Conservation District shall thereafter be the Fiscal Agent for the SRWC and may apply for and receive grant funds on behalf of the SRWC.

4. That all other terms and conditions of the Sauk River Watershed Collaborative Fiscal Agent Agreement entered into in October 2023 shall remain in full force and effect. A copy of said Fiscal Agent Agreement is attached and incorporated herein.

IN WITNESS WHEREOF, the Parties to this Agreement have caused this Amendment to be executed and effective on July 30, 2026.

STEARNS COUNTY

By: _____
Steven L. Notch, Stearns County Board Chair Date _____

By: _____
Randy R. Schreifels, Stearns Co. Auditor Treasurer Date _____

POPE COUNTY

By: _____
Pope County Board Chair Date _____

By: _____
Pope County Auditor Date _____

DOUGLAS COUNTY

By: _____
Douglas County Board Chair

Date

By: _____
Douglas County Auditor

Date

TODD COUNTY

By: _____
Todd County Board Chair

Date

By: _____
Todd County Auditor

Date

STEARNS COUNTY SWCD

By: _____

Board Chair

Date

By: _____

District Administrator

Date

POPE COUNTY SWCD

By: _____

Board Chair

Date

By: _____

District Administrator

Date

DOUGLAS COUNTY SWCD

By: _____

Board Chair

Date

By: _____

District Administrator

Date

TODD COUNTY SWCD

By: _____

Board Chair

Date

By: _____

District Administrator

Date

SAUK RIVER WATERSHED DISTRICT

By: _____

Board Chair

Date

By: _____

District Administrator

Date